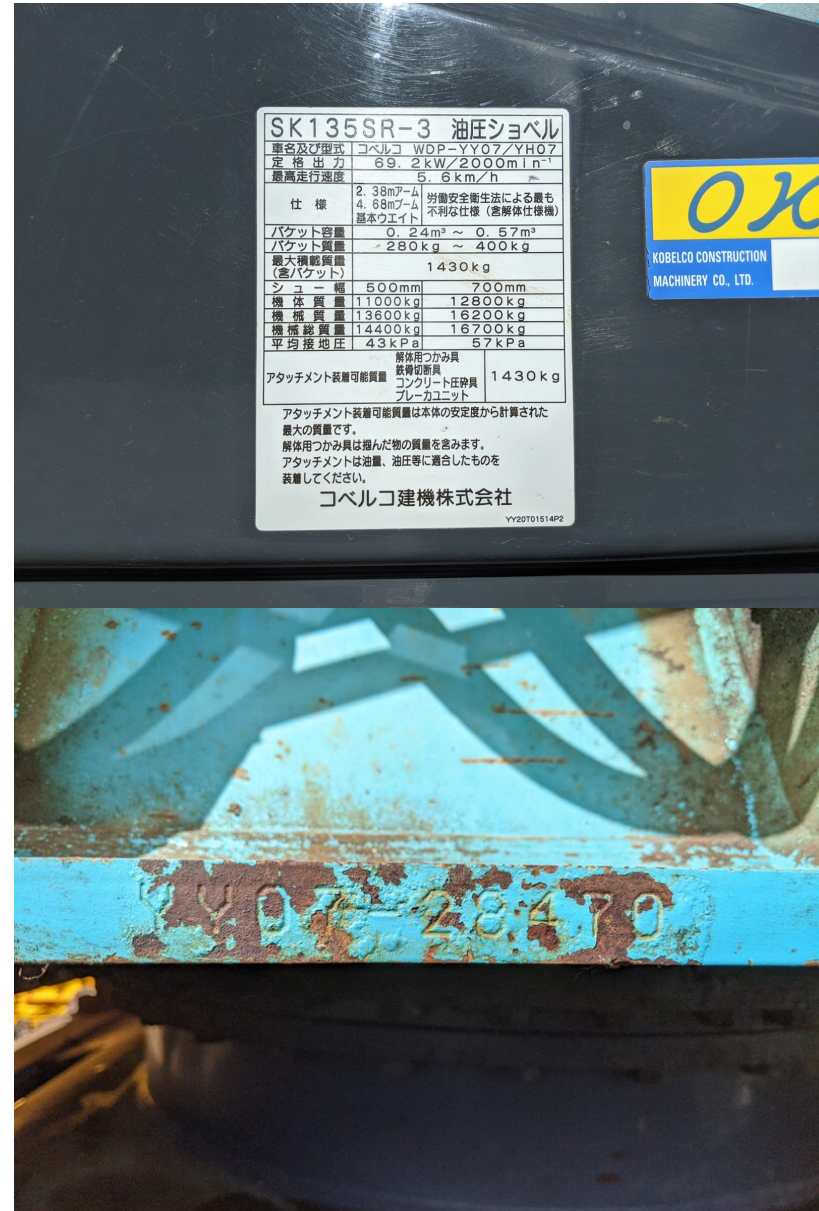


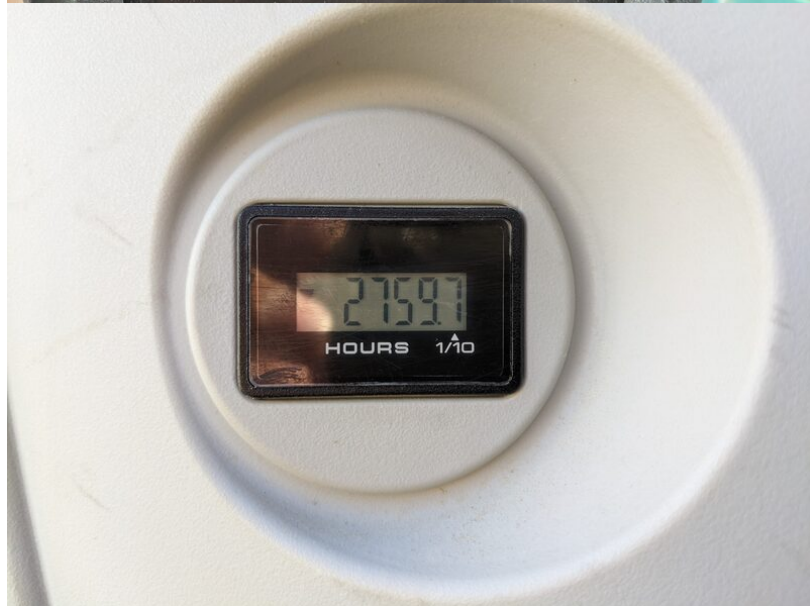
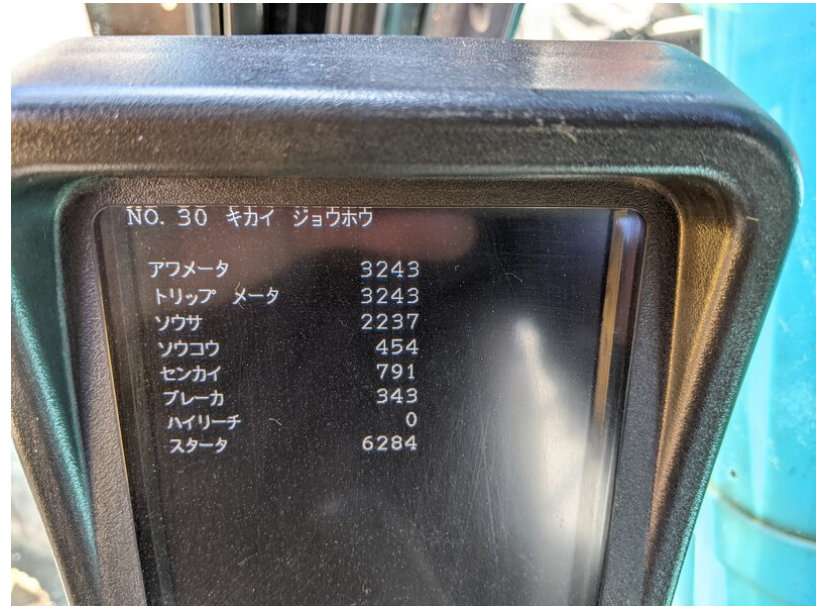
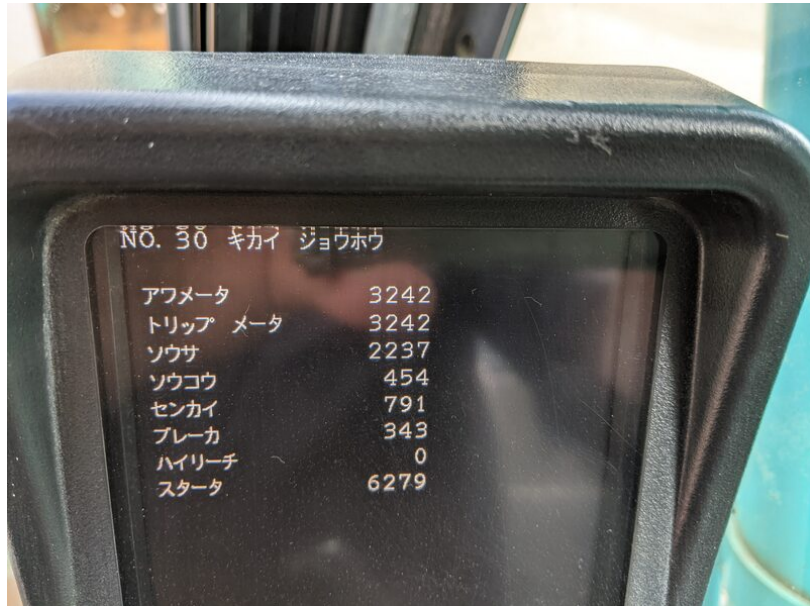
Model SK135SR-3
Year 2016

Serial YY07-28470
Hours 3243

Photos taken at Sep. 12, 2024



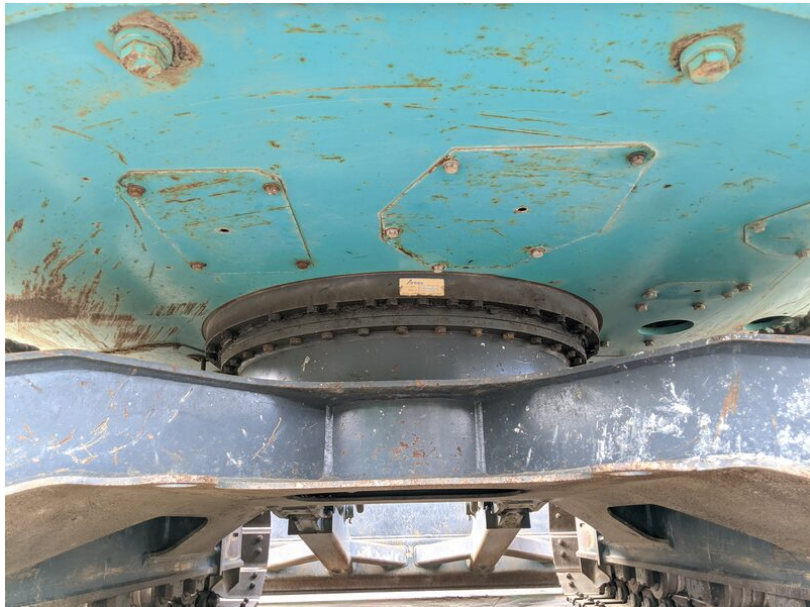




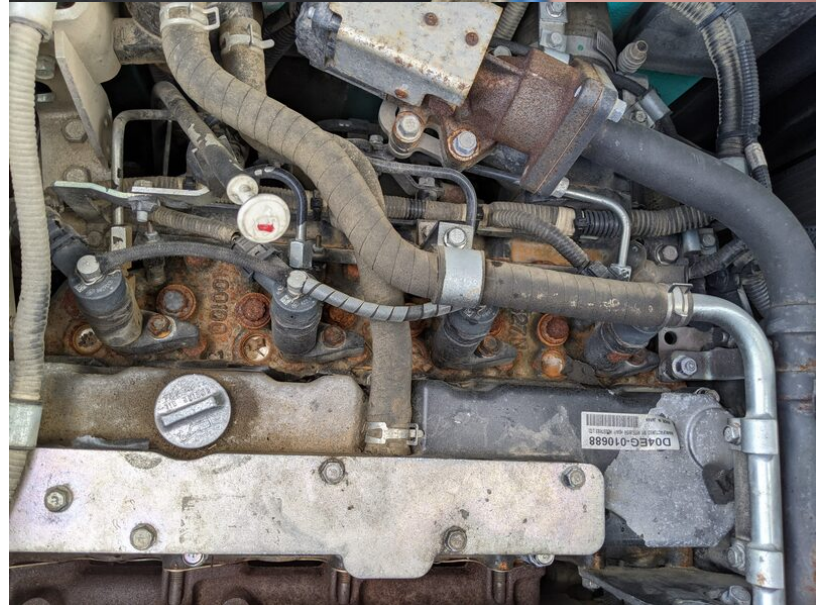
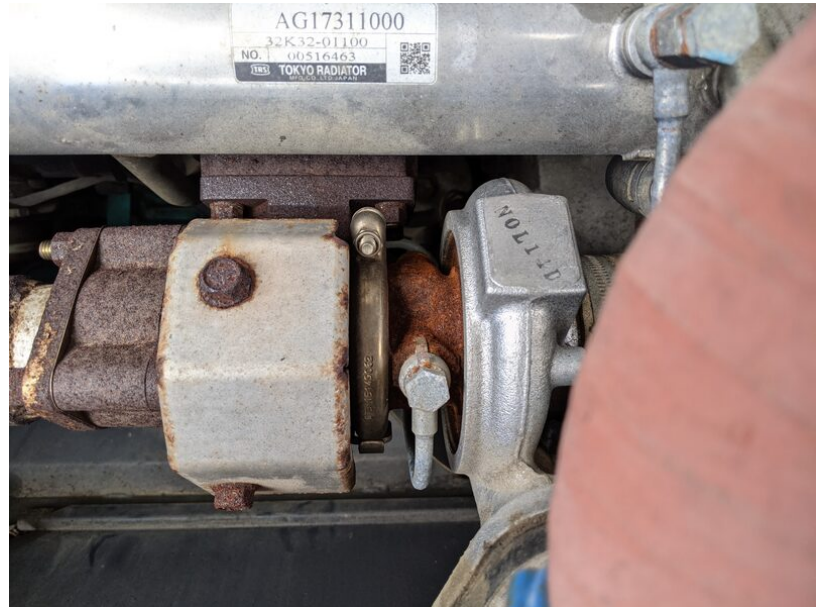
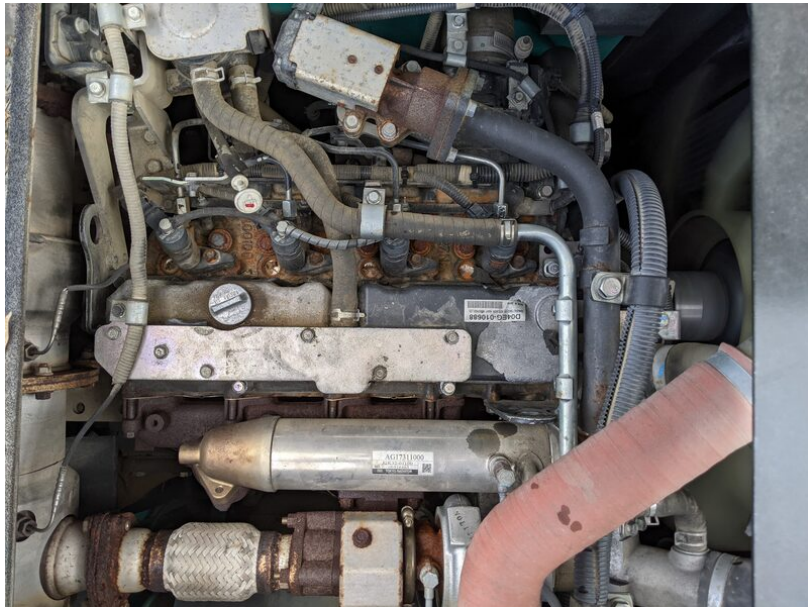




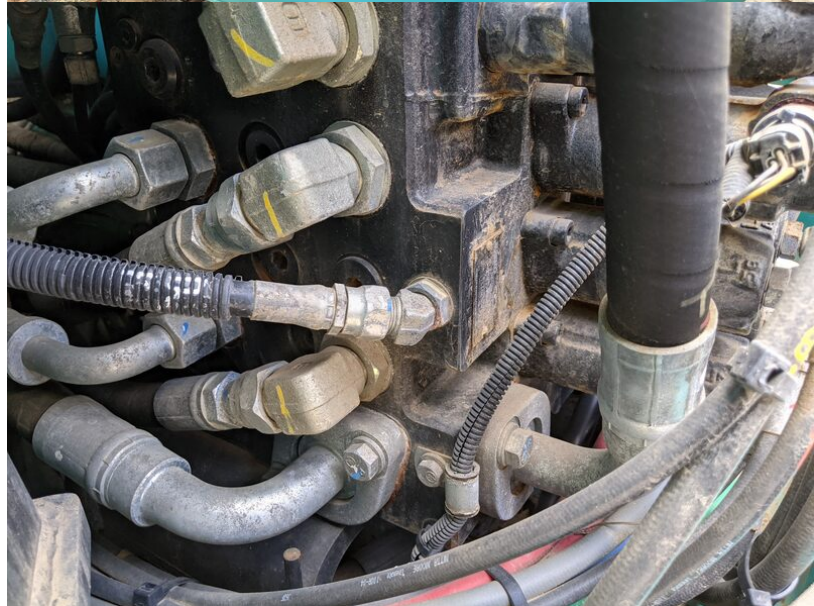






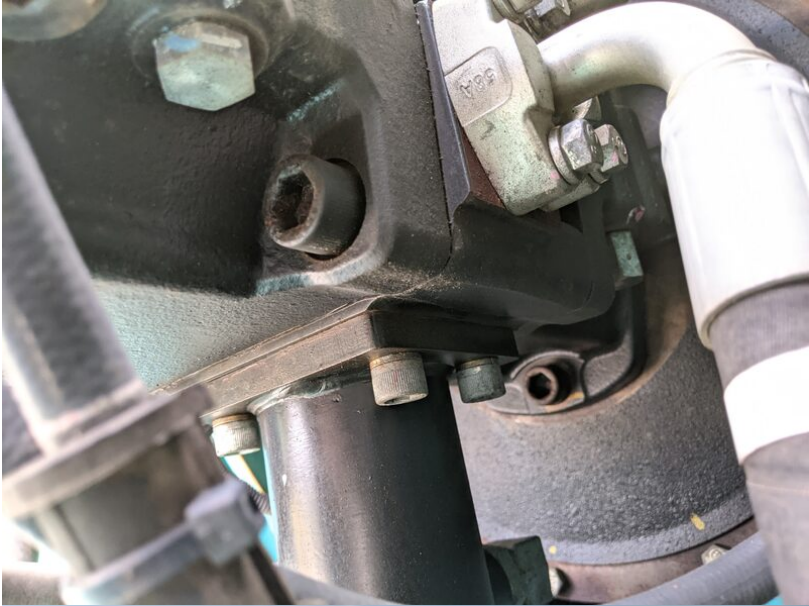


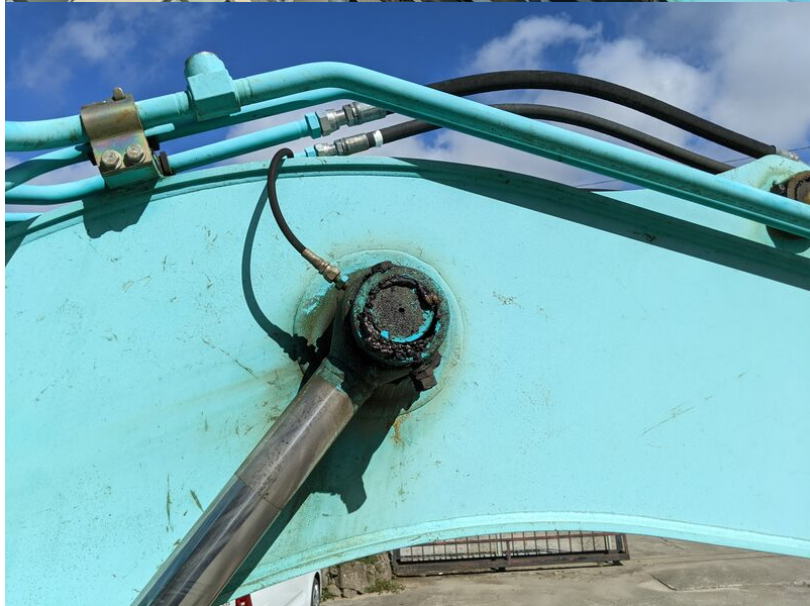
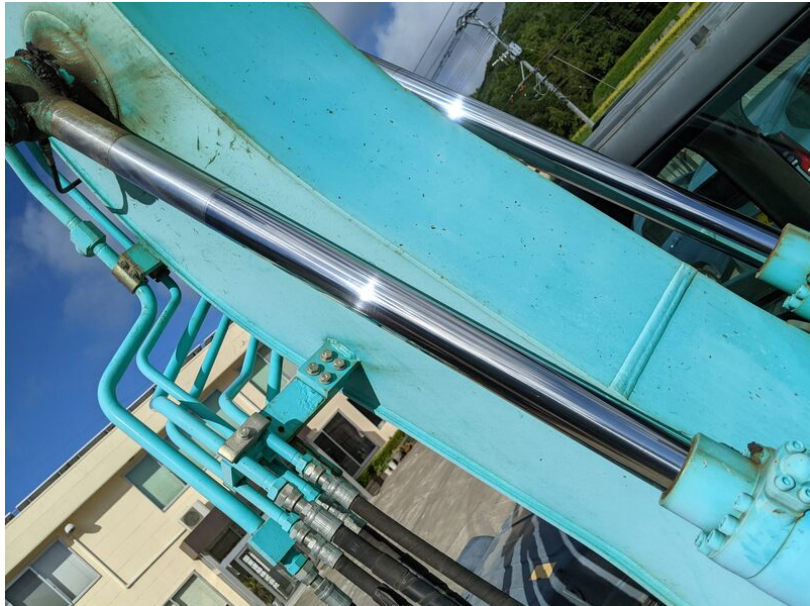


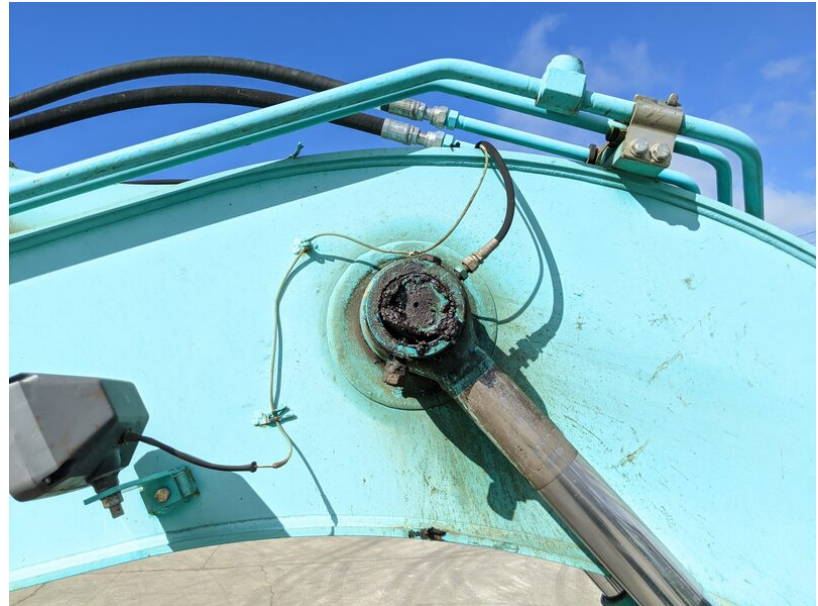


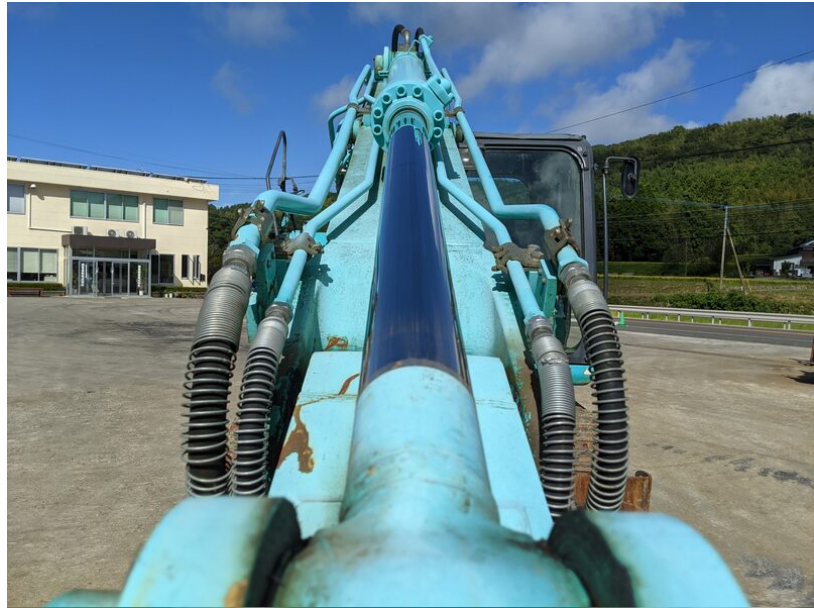


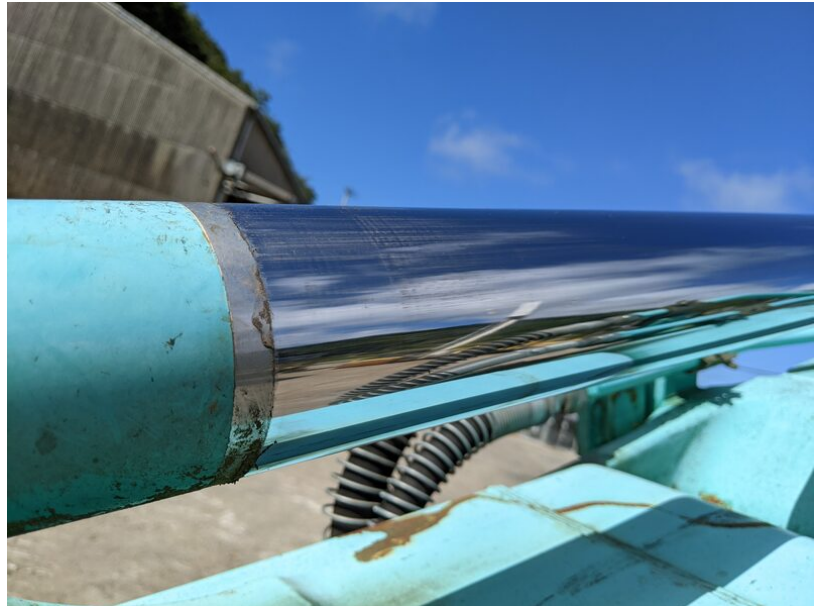






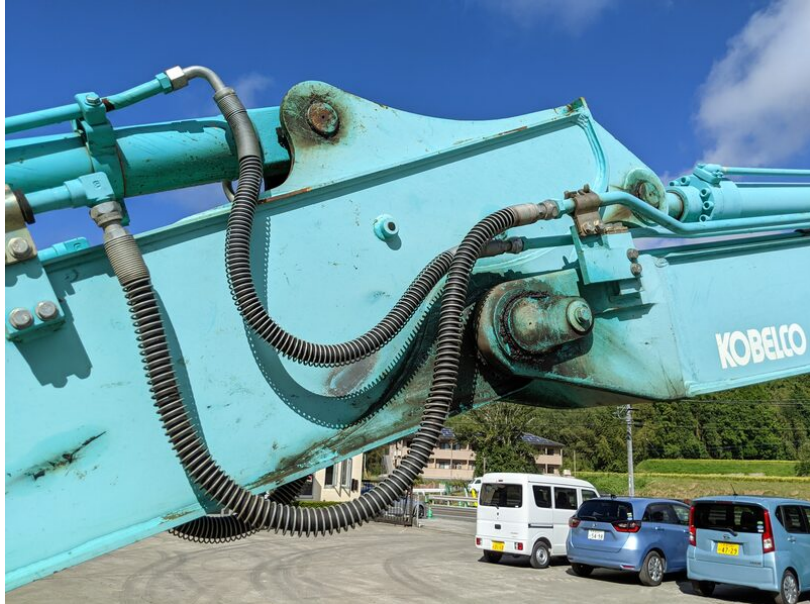








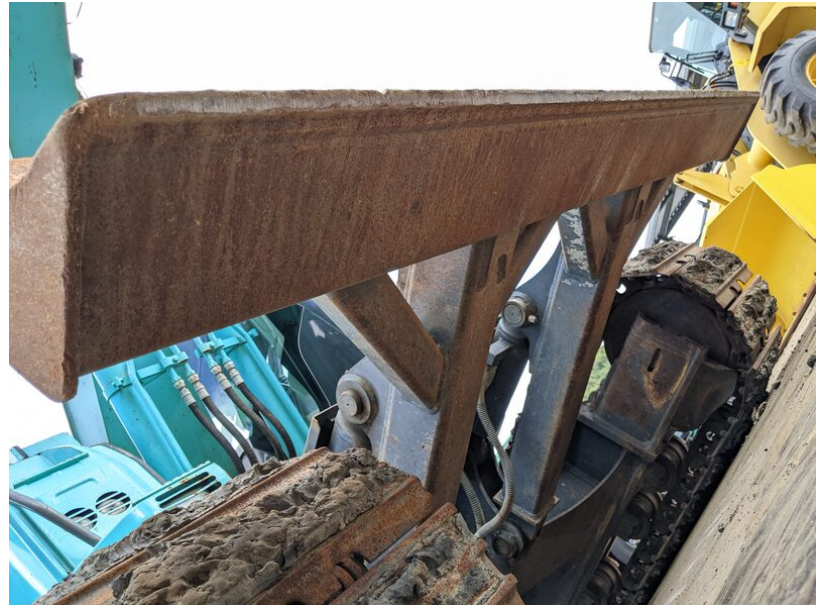










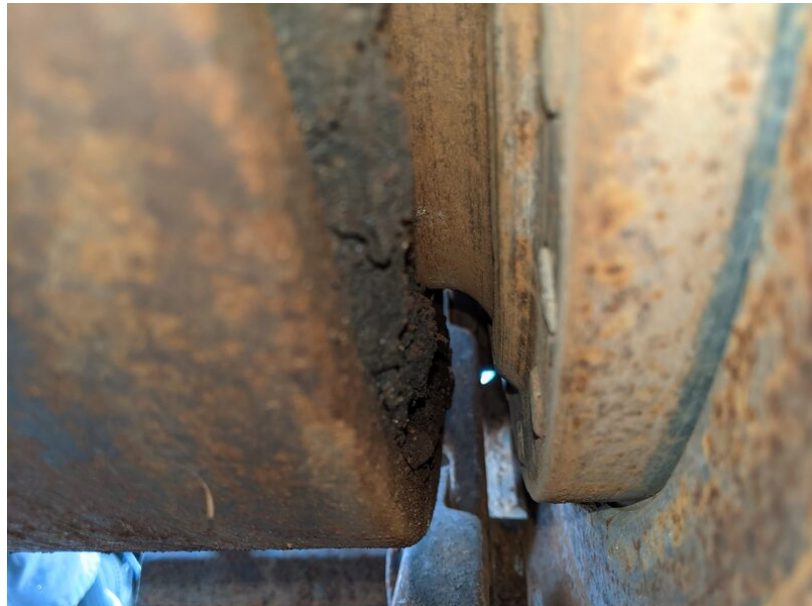














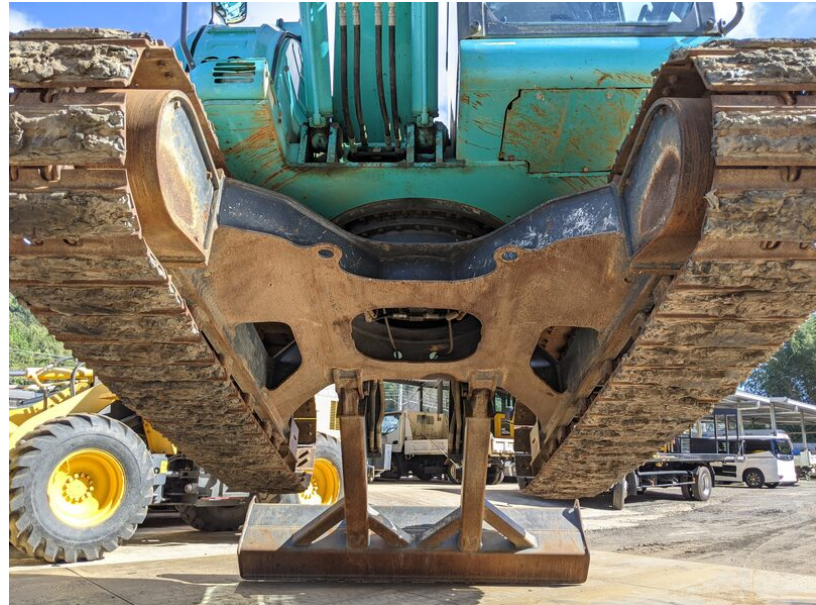
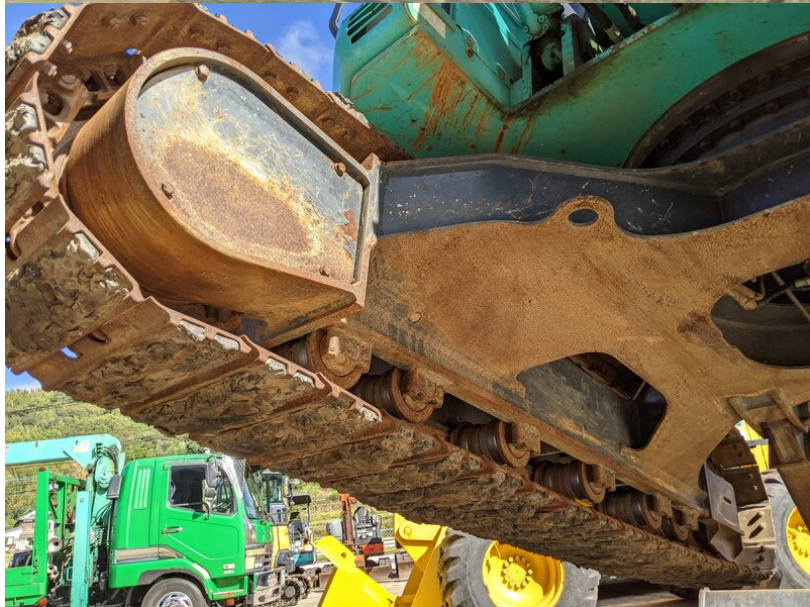






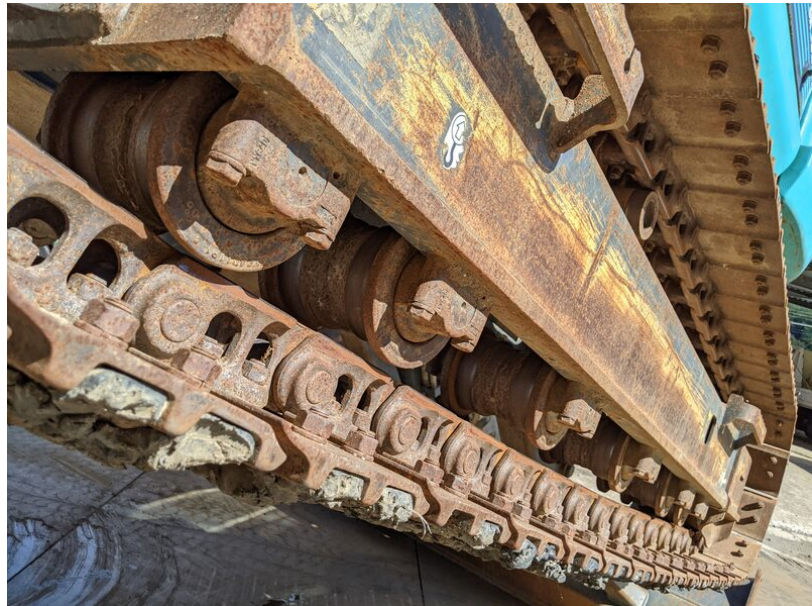












ロータリマルチ
コントロール
操作パターン
操作前に取扱い説明書を読
んで、操作パターンを
確認してください。
(ISO: コベルコ標準
H: コマツ、日立、住友
M: 三菱、K: 神鋼)

危険
切換時はバケットを接地させ、
ロックレバーを「ロック位置」
にし、エンジンを停止してから
実施してください。

Y120101388P1

