

Model SH135X-7

Serial SMT135X7T00BB1590

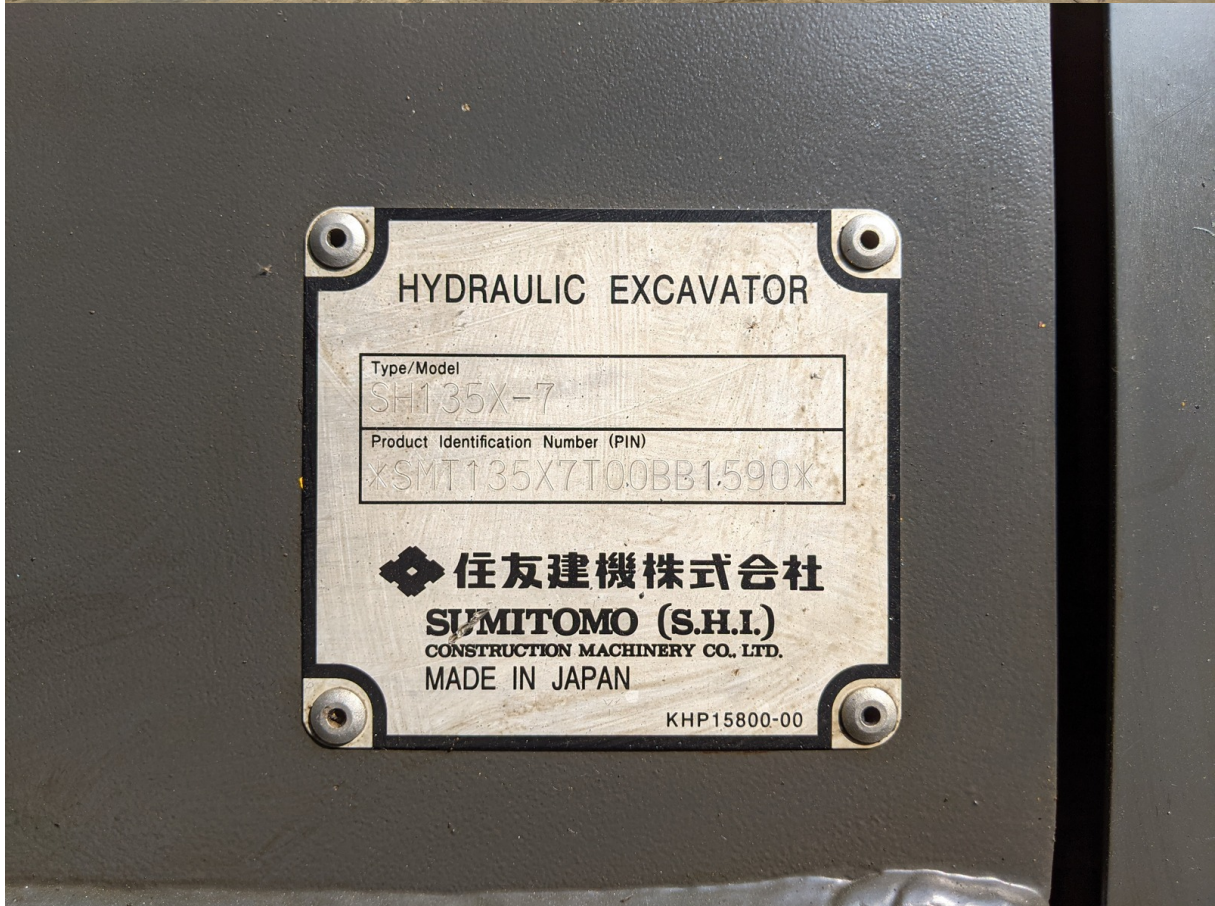
Year 2018

Hours 3179

Photos taken at Sep. 06, 2024





















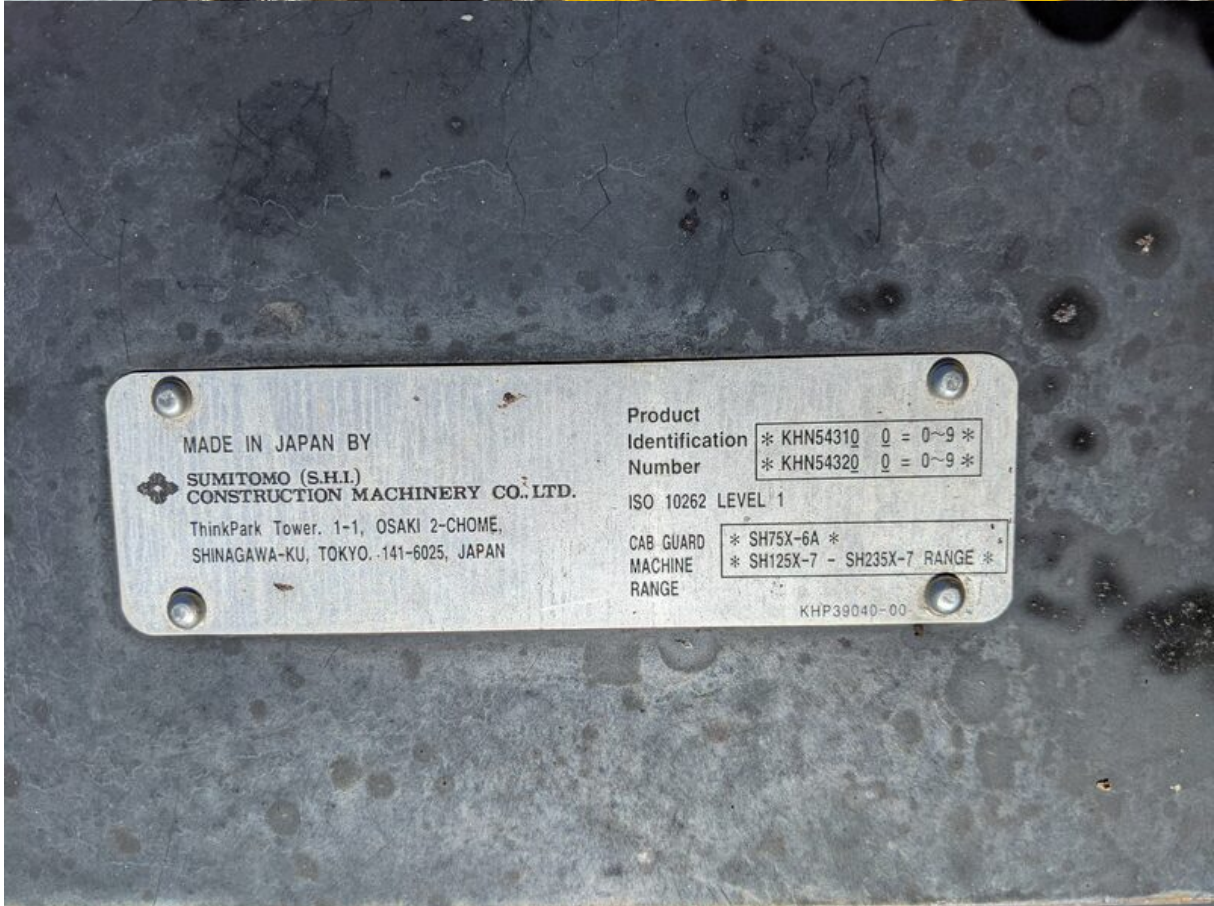






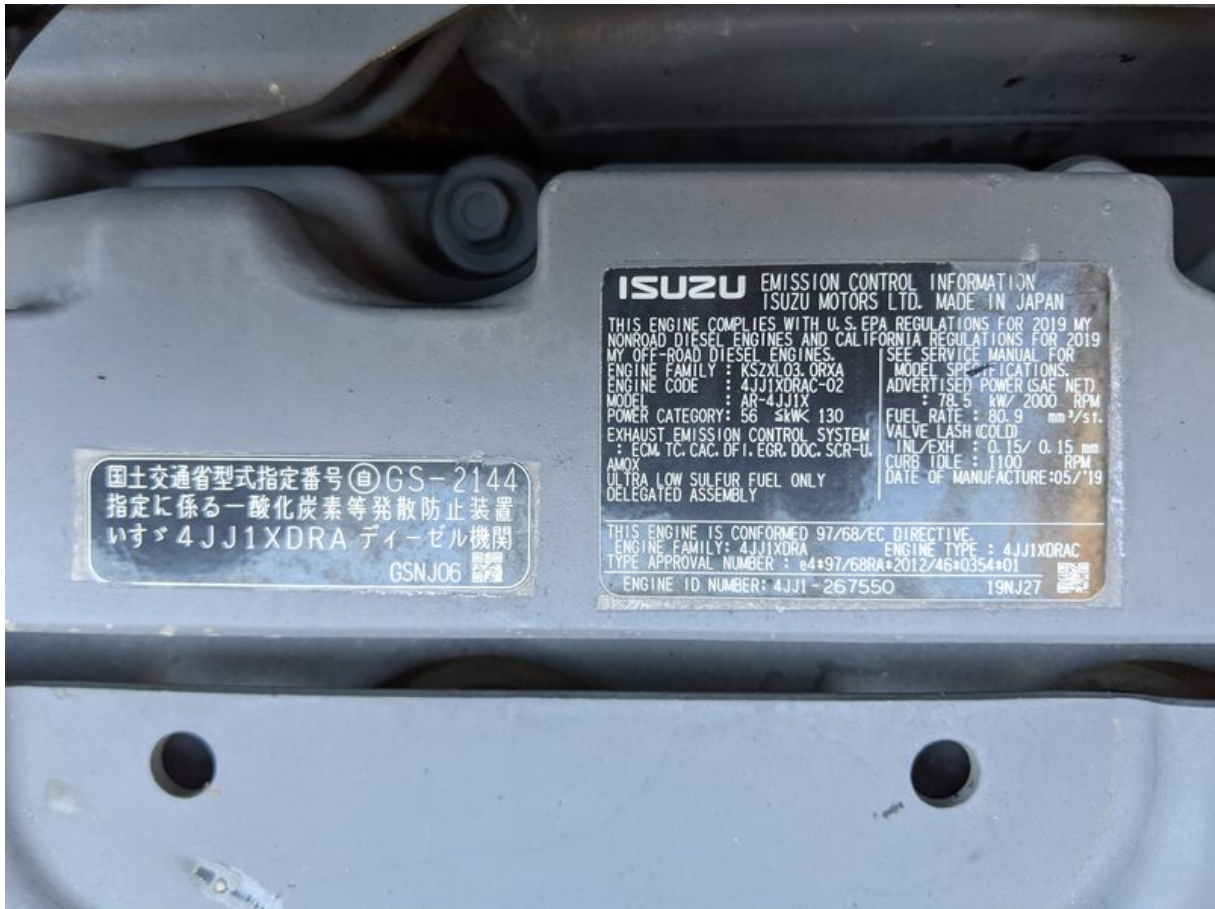


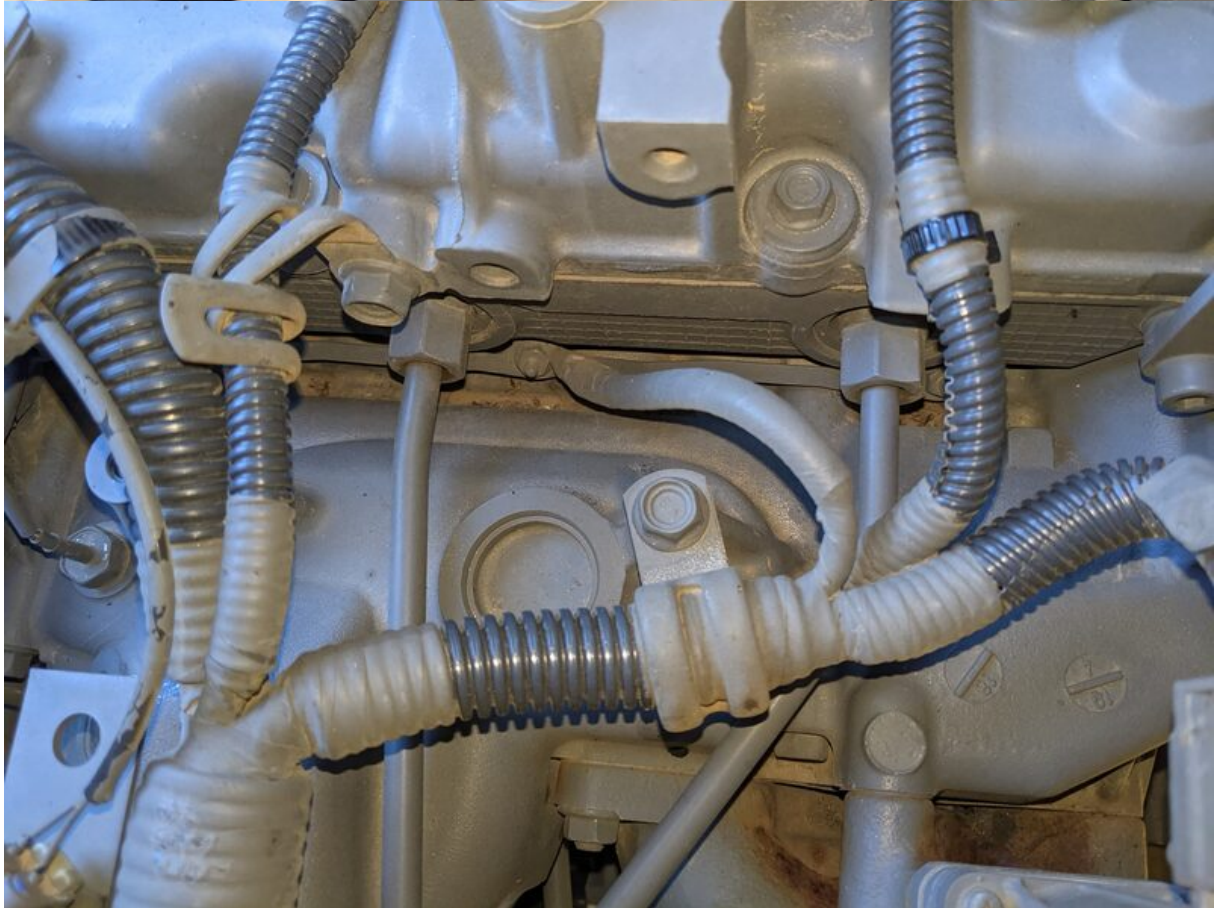


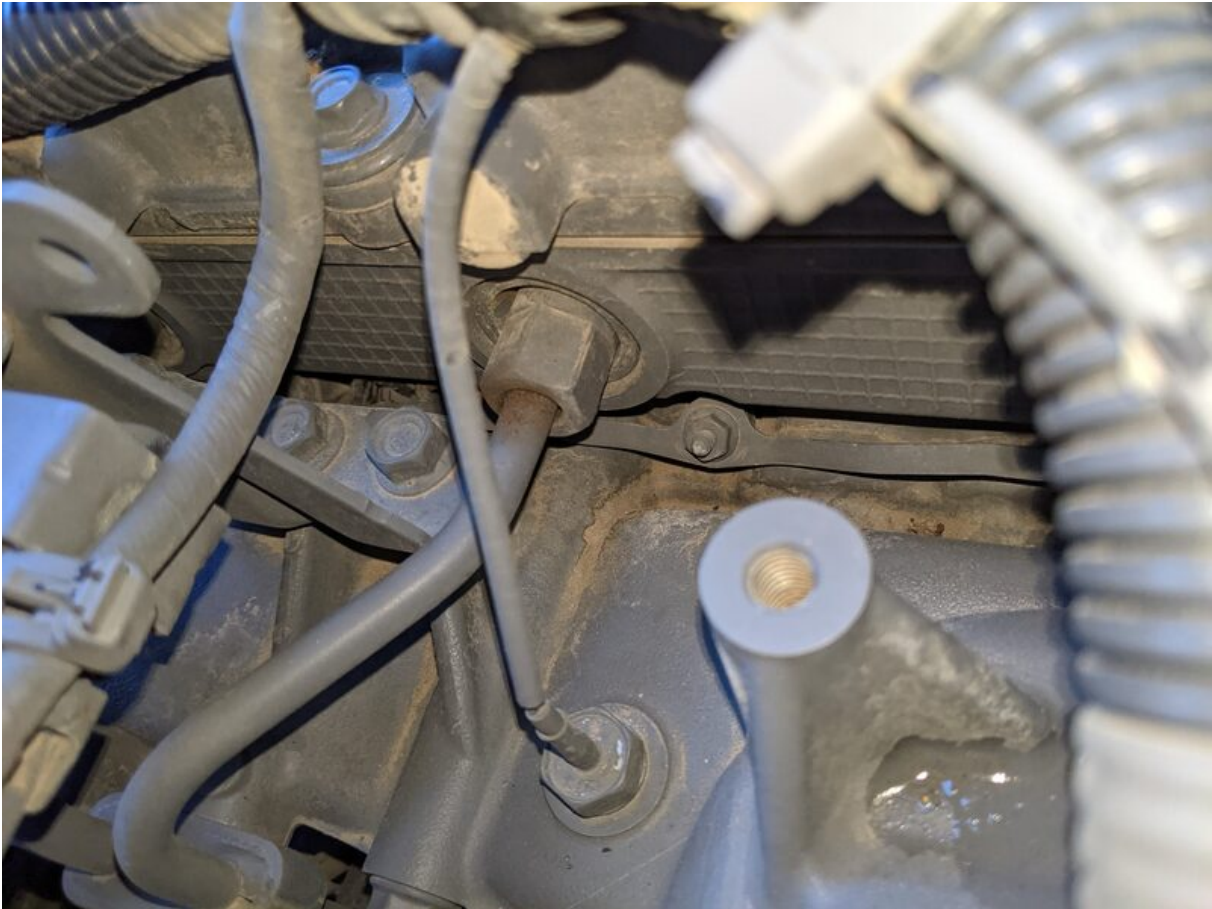


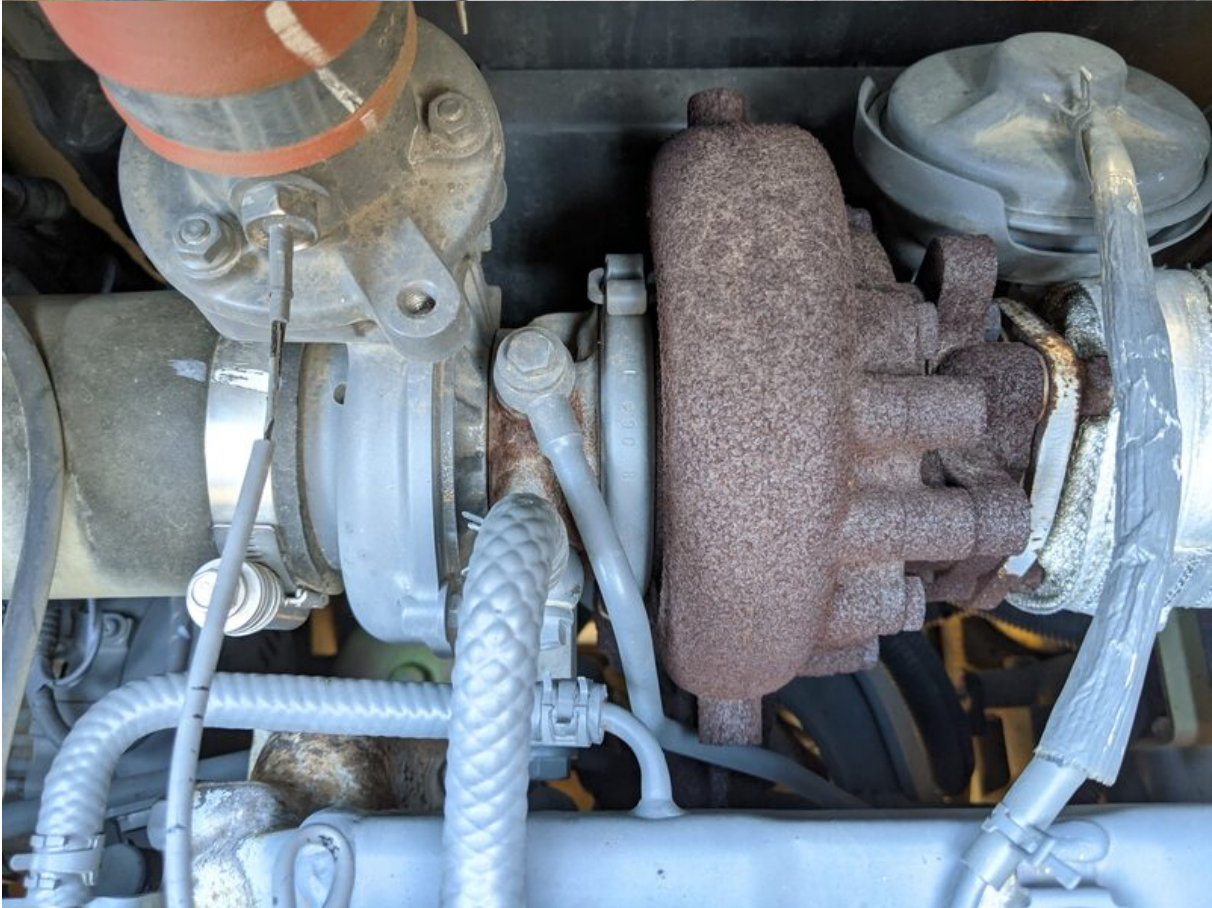










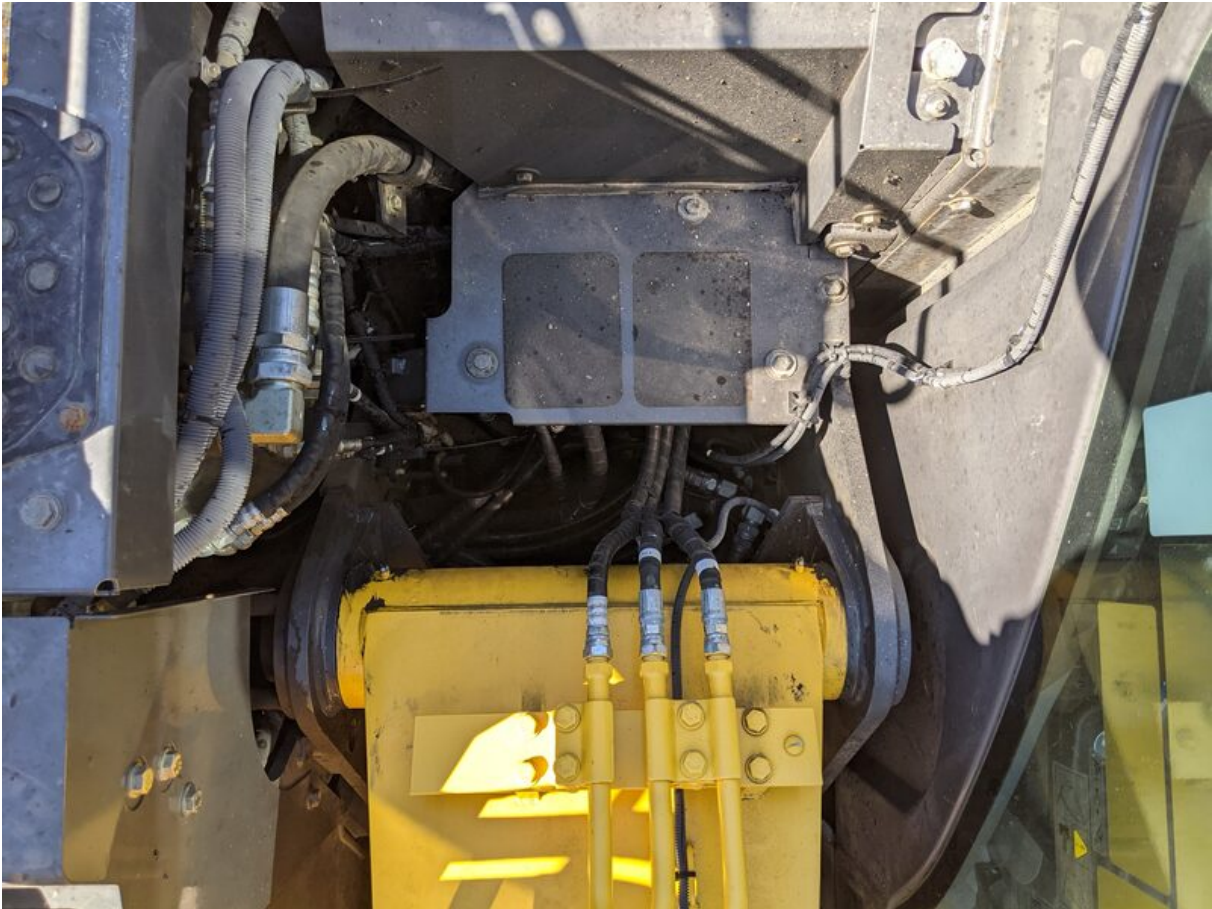






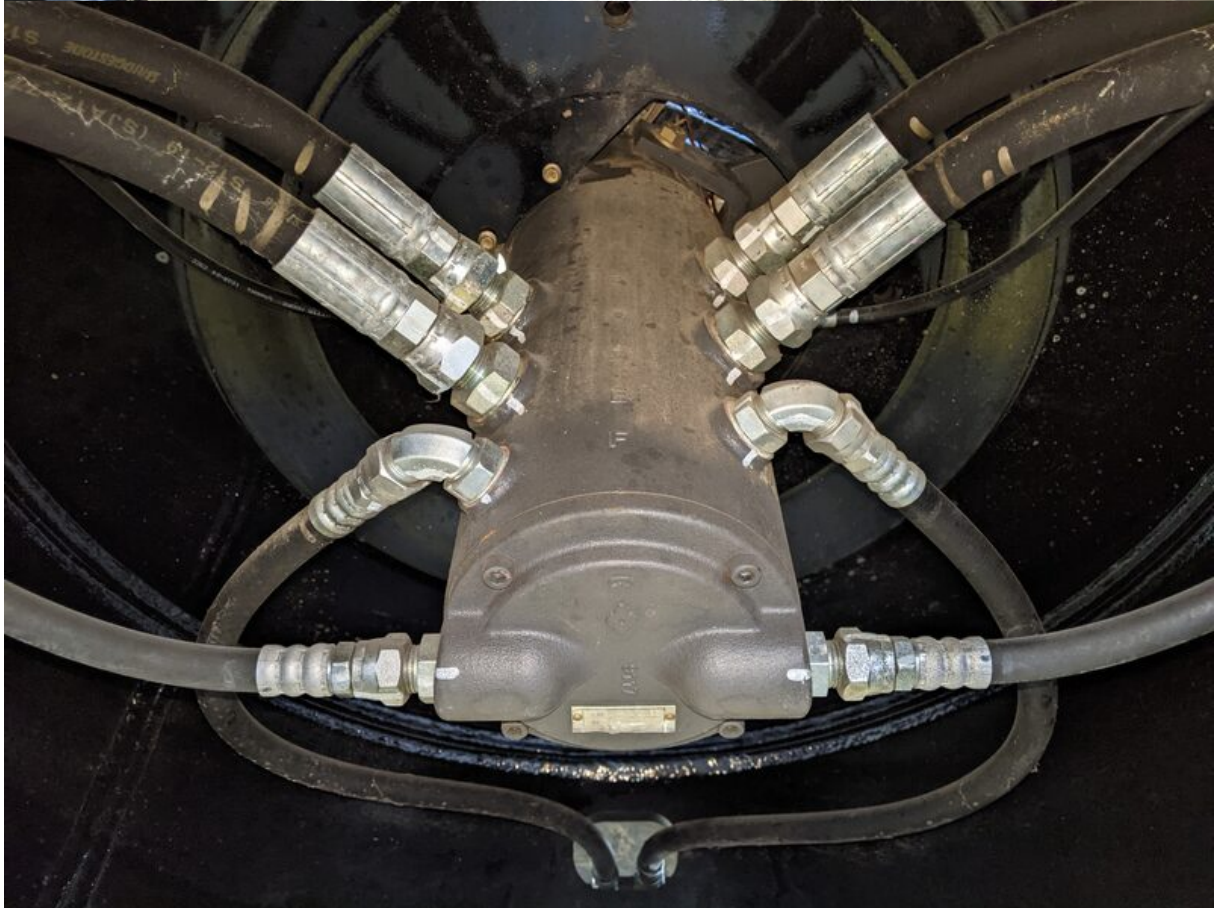




















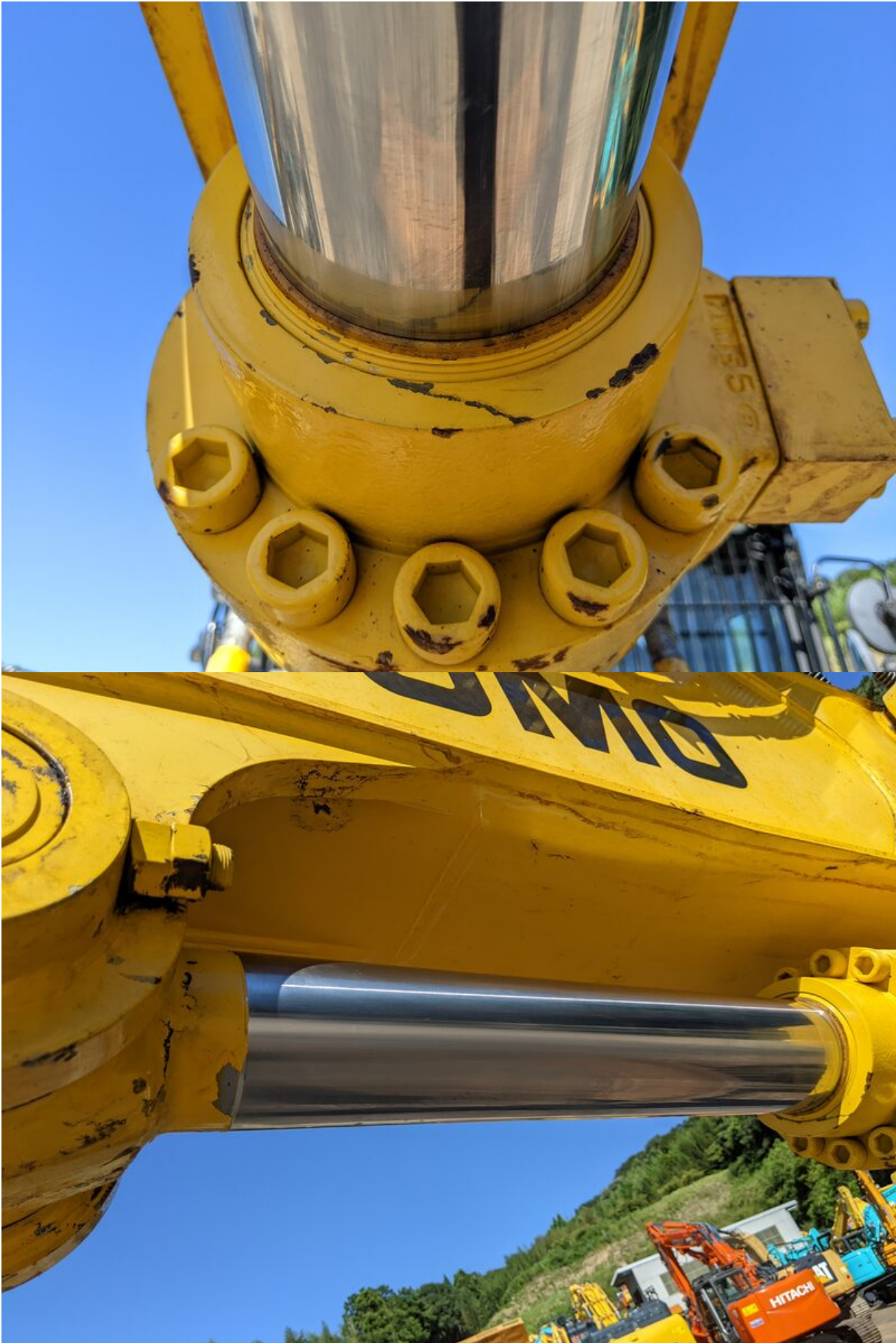














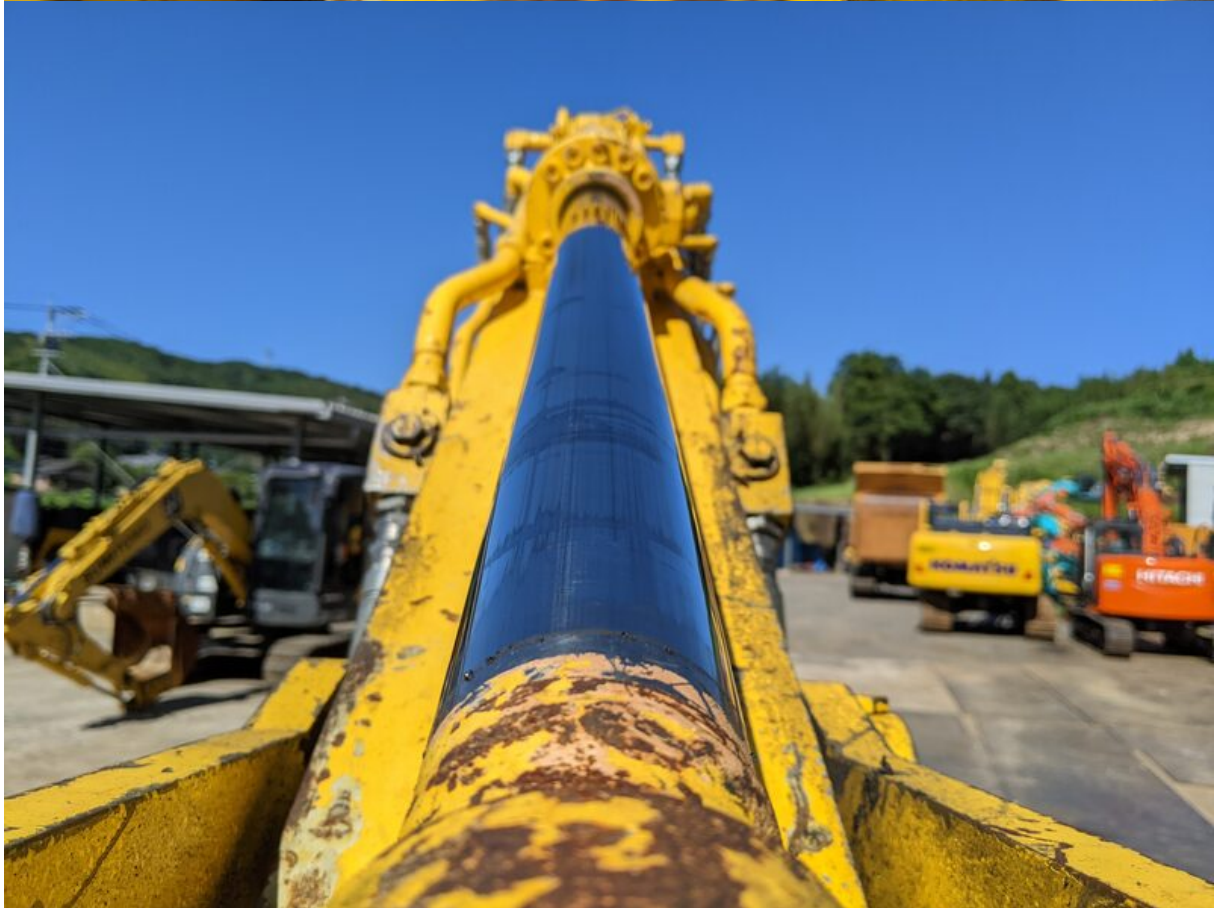


























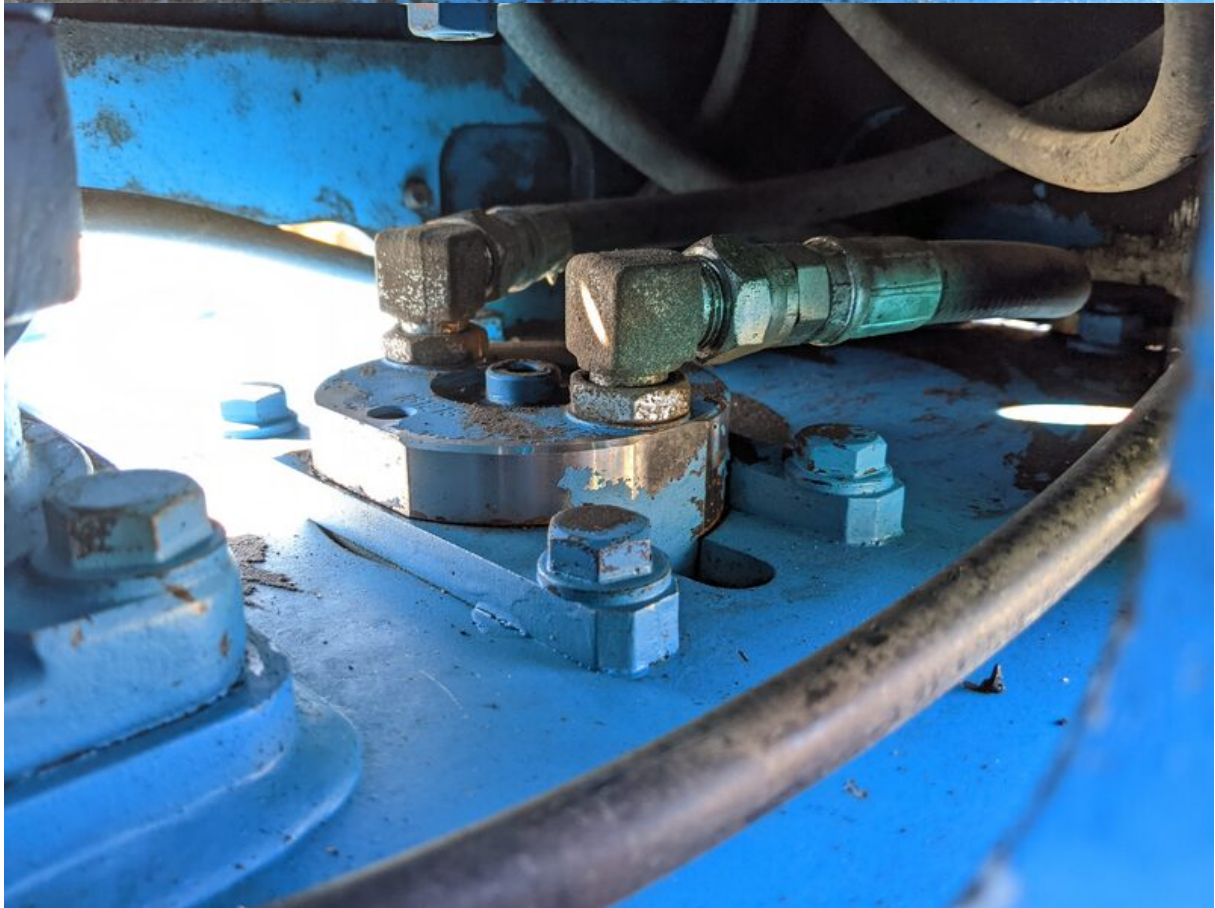














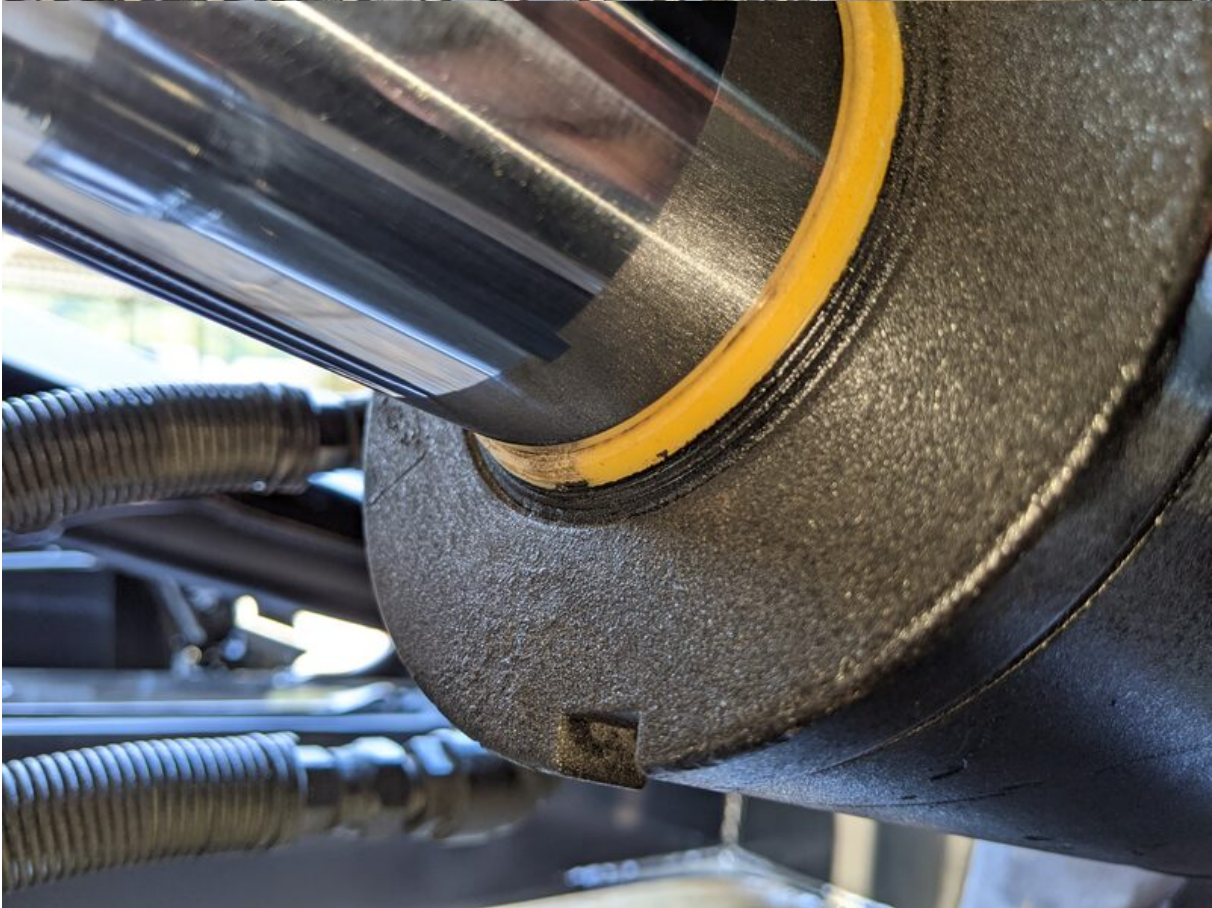








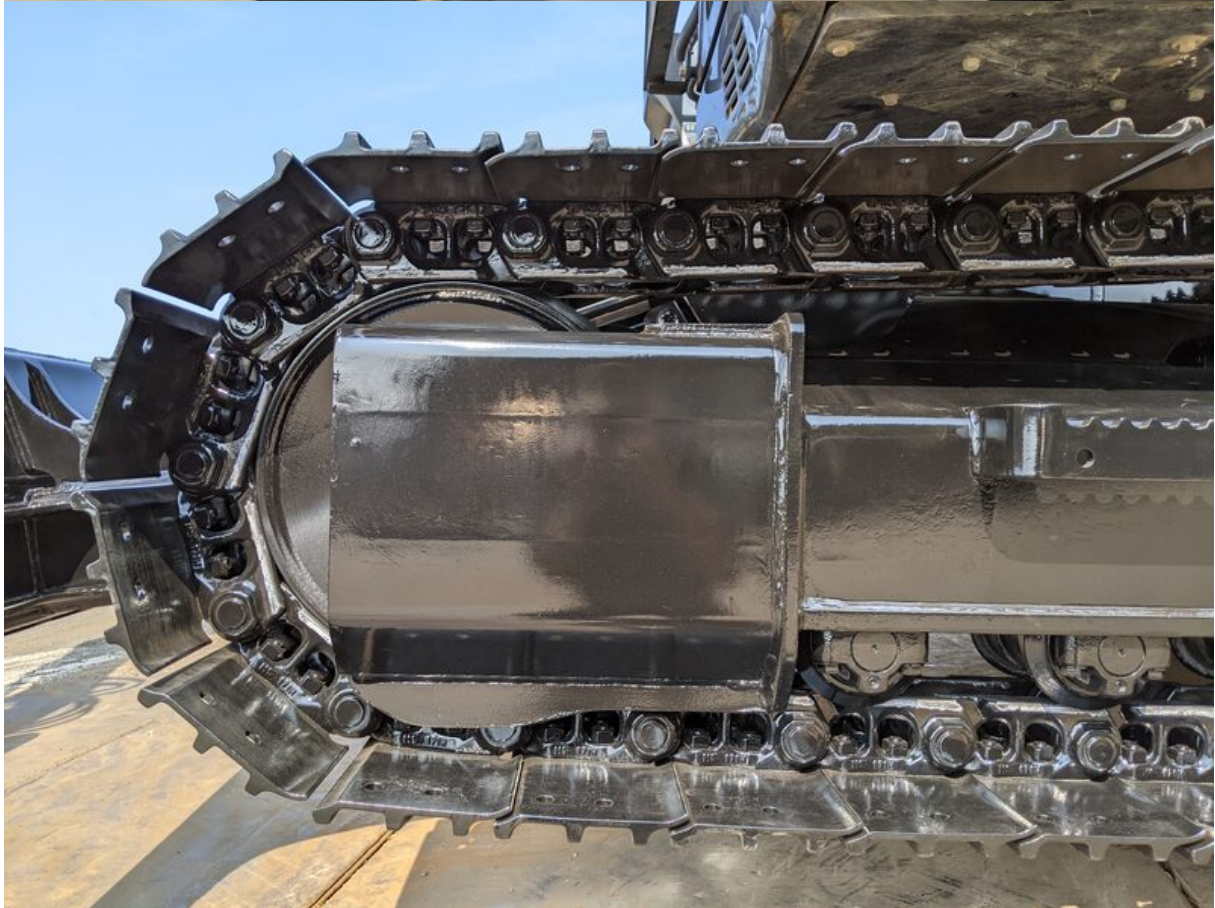






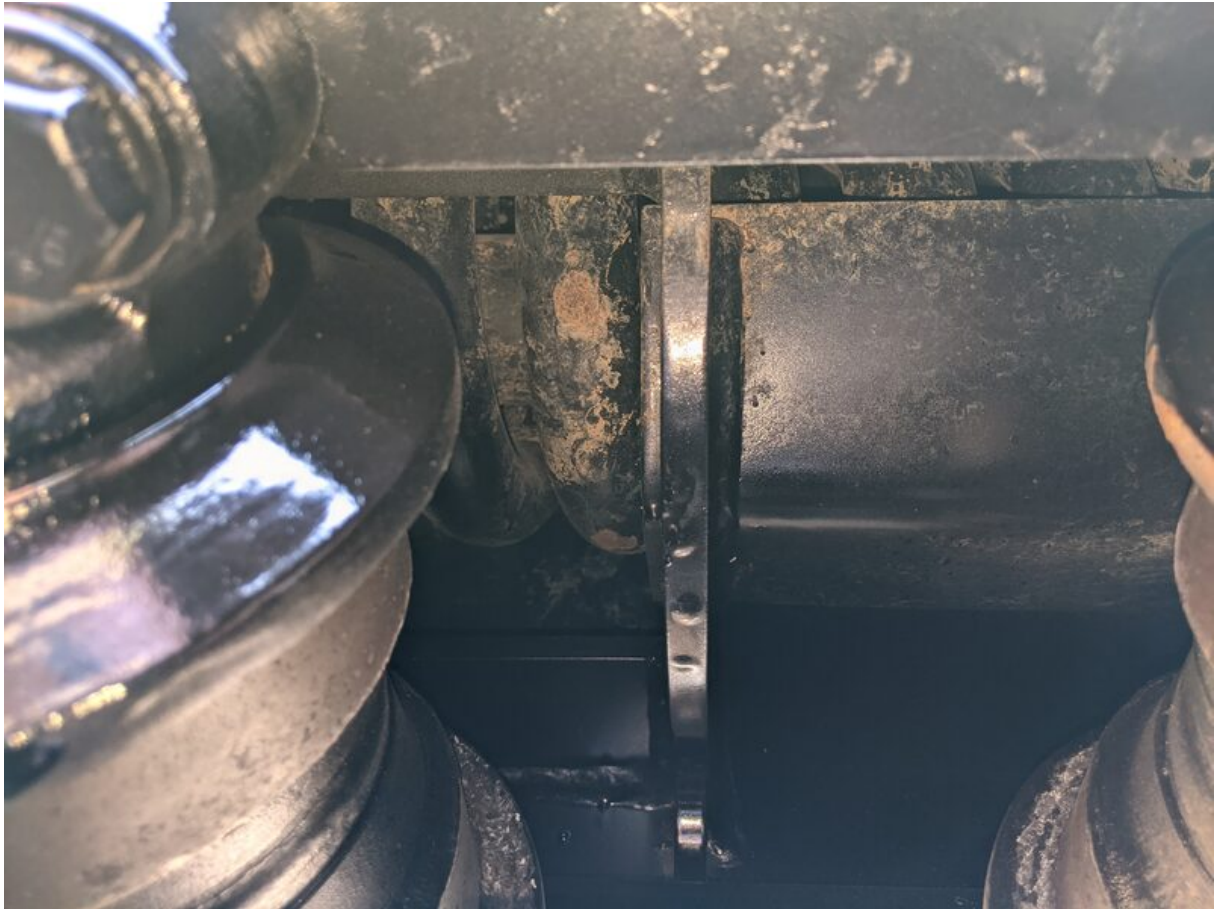


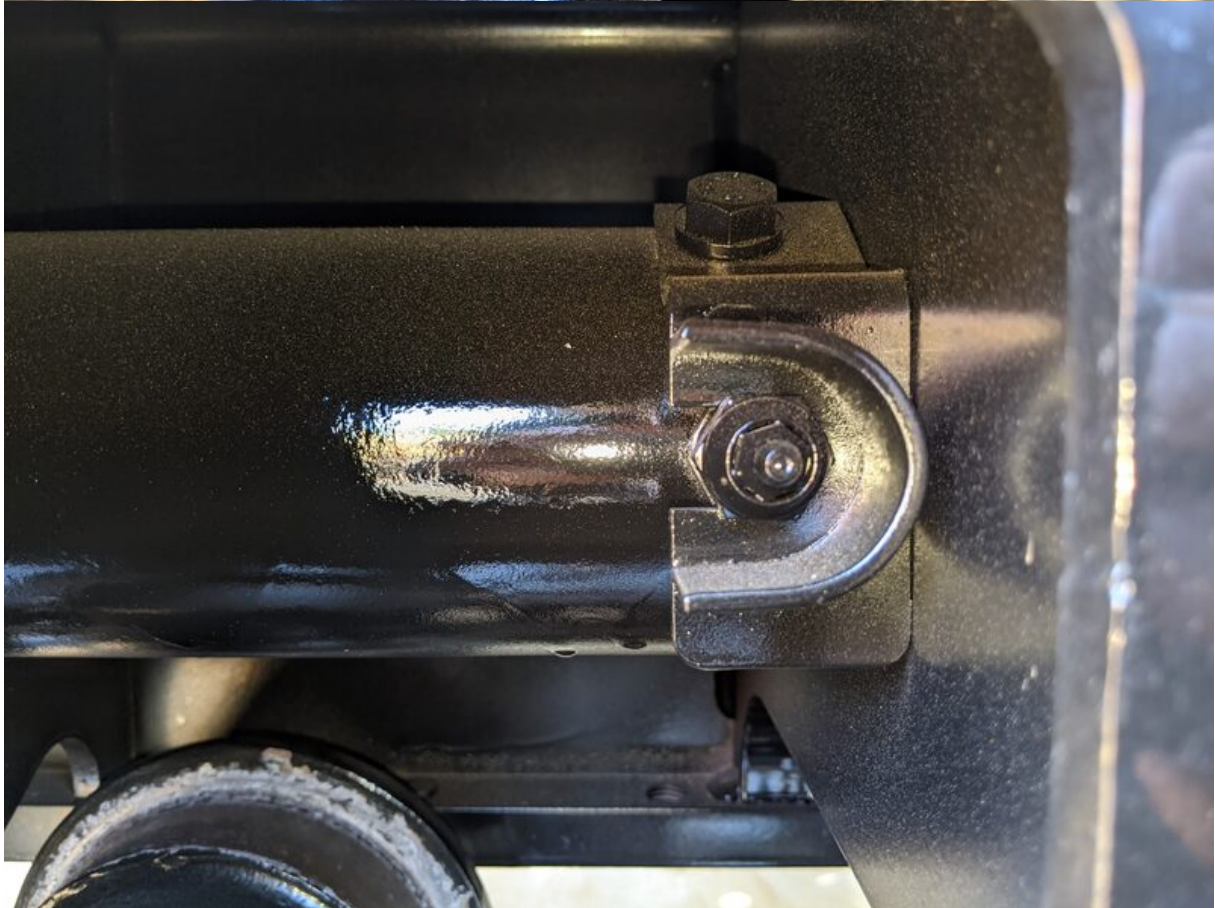






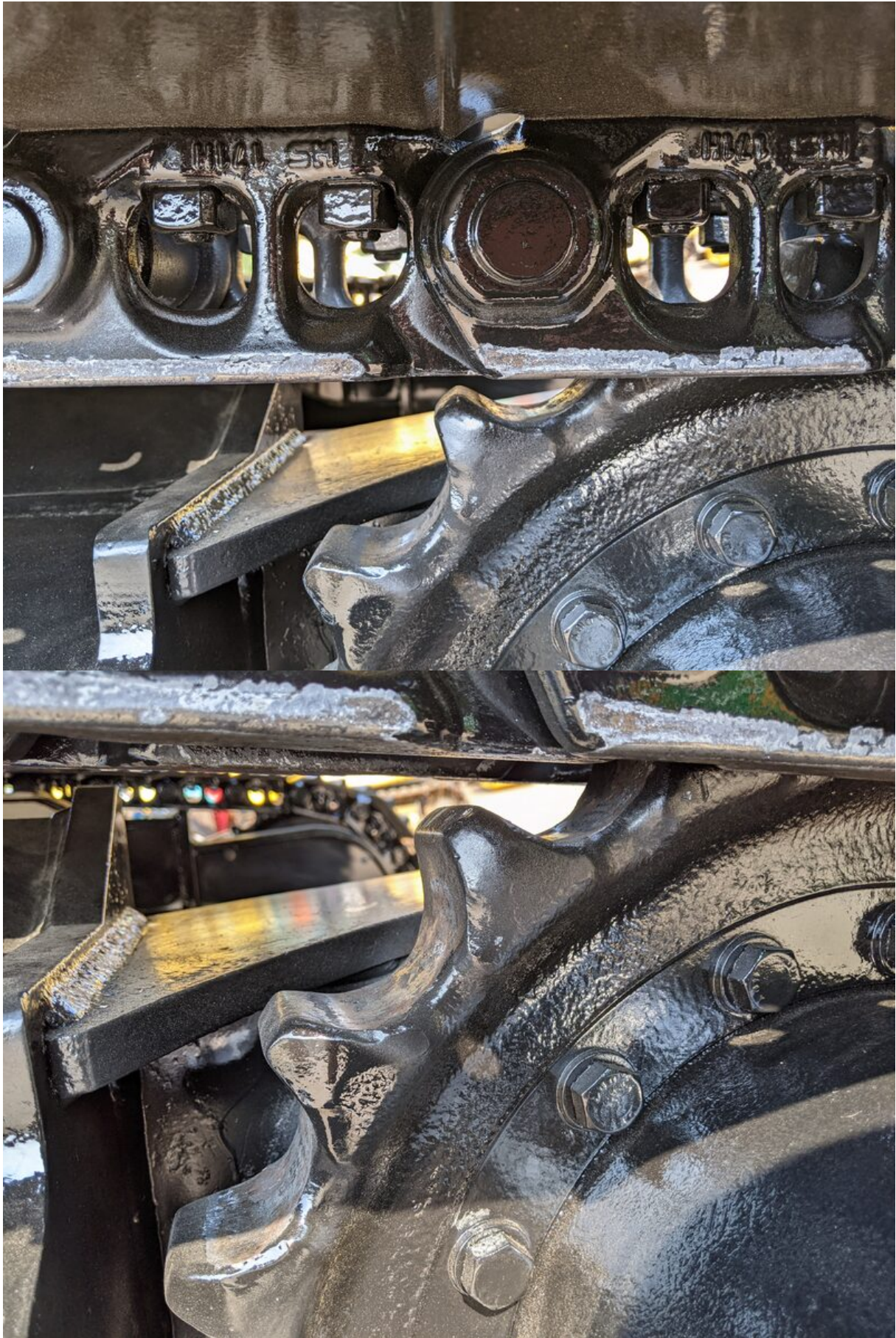






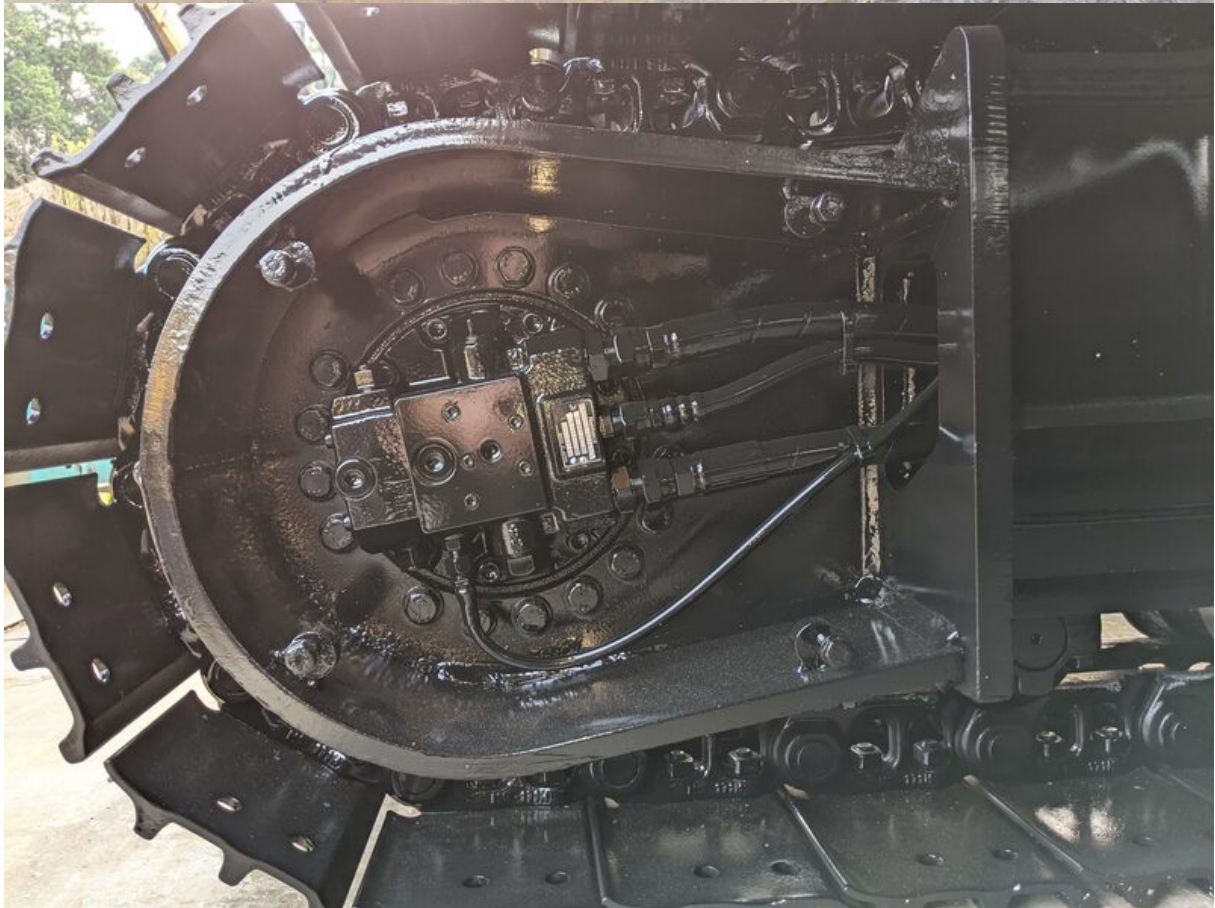








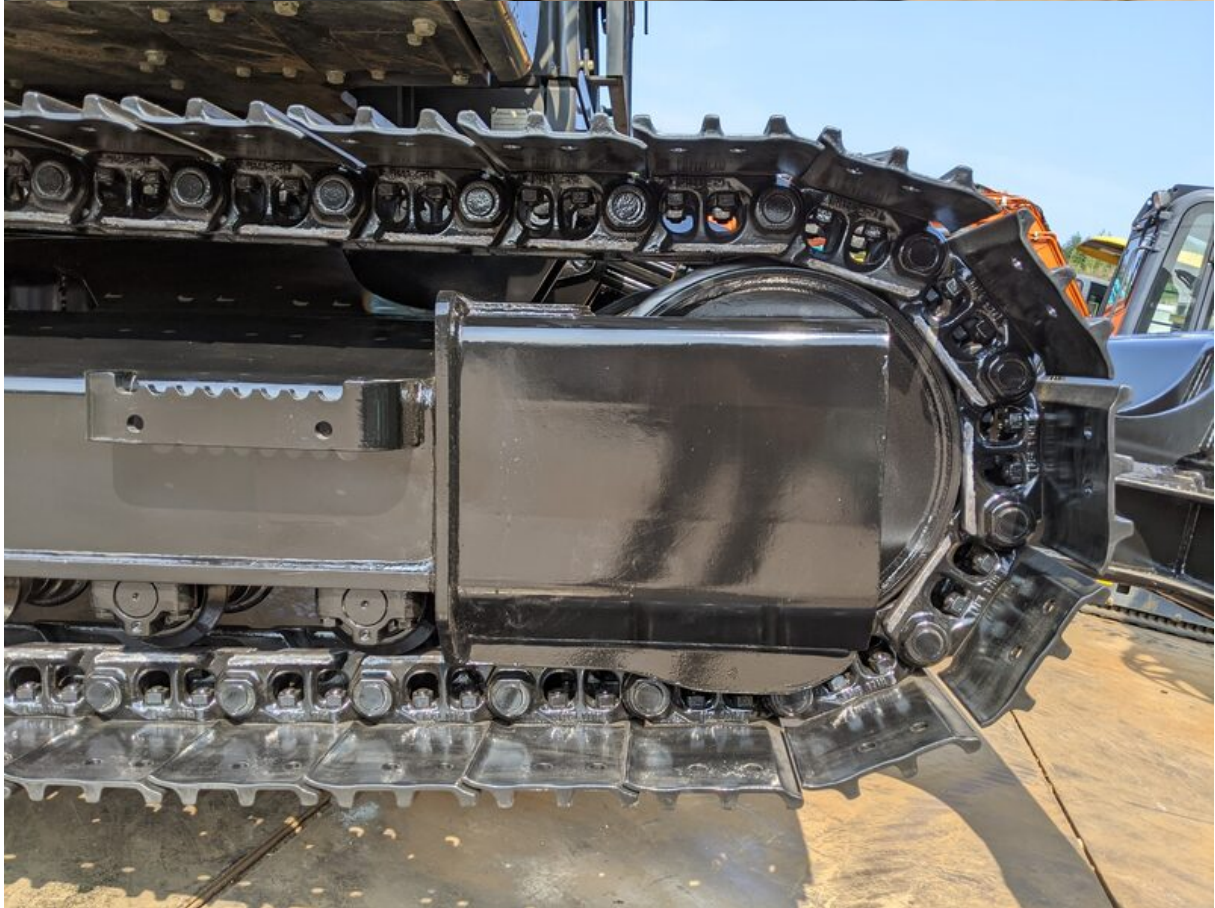








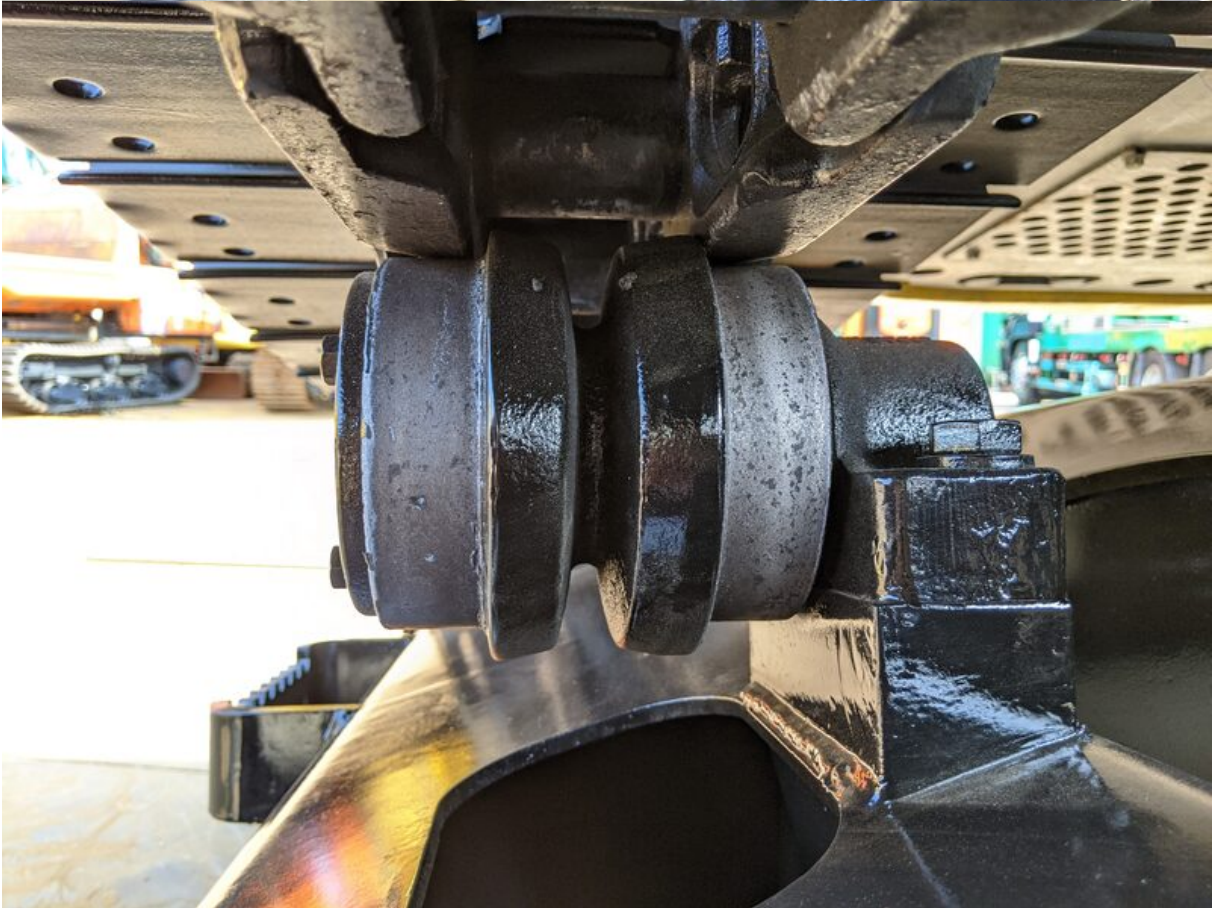
























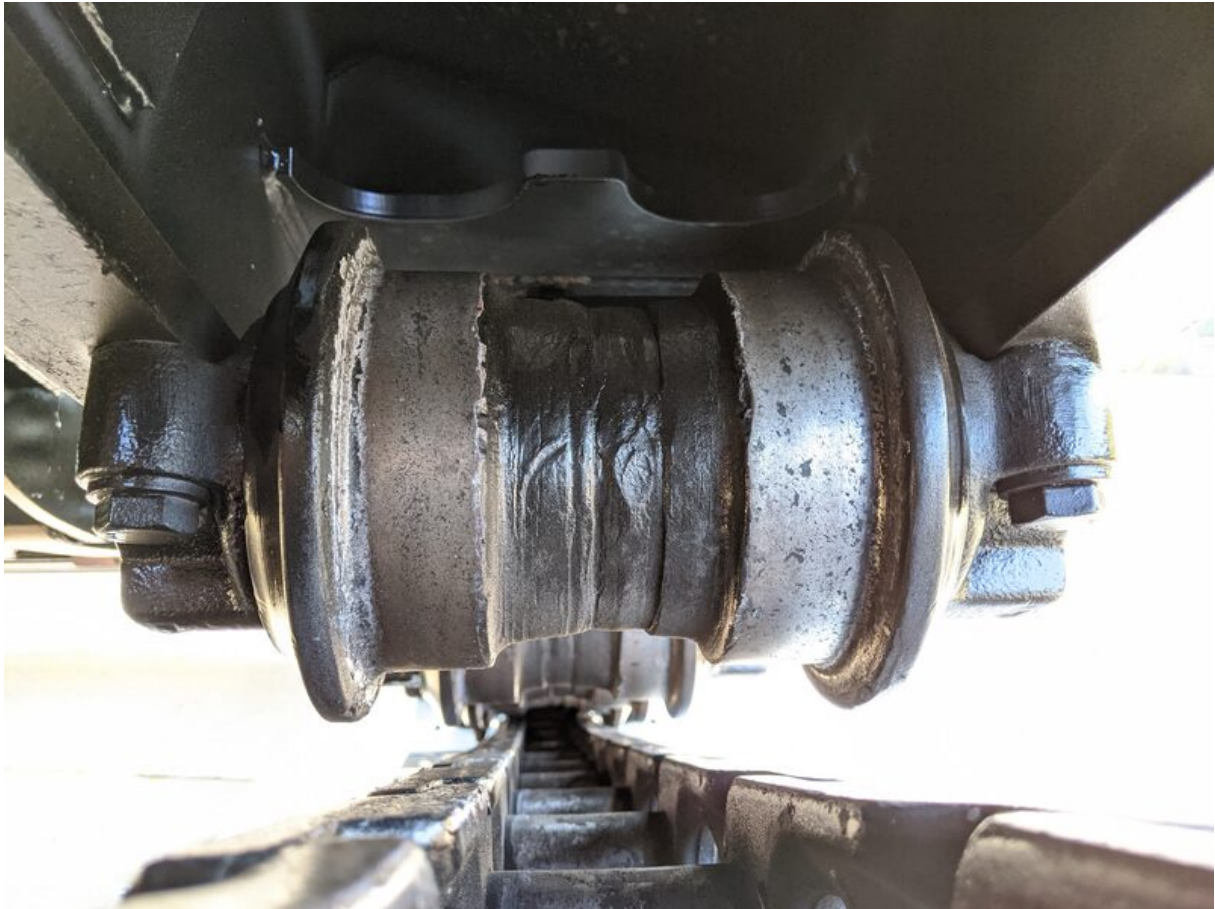


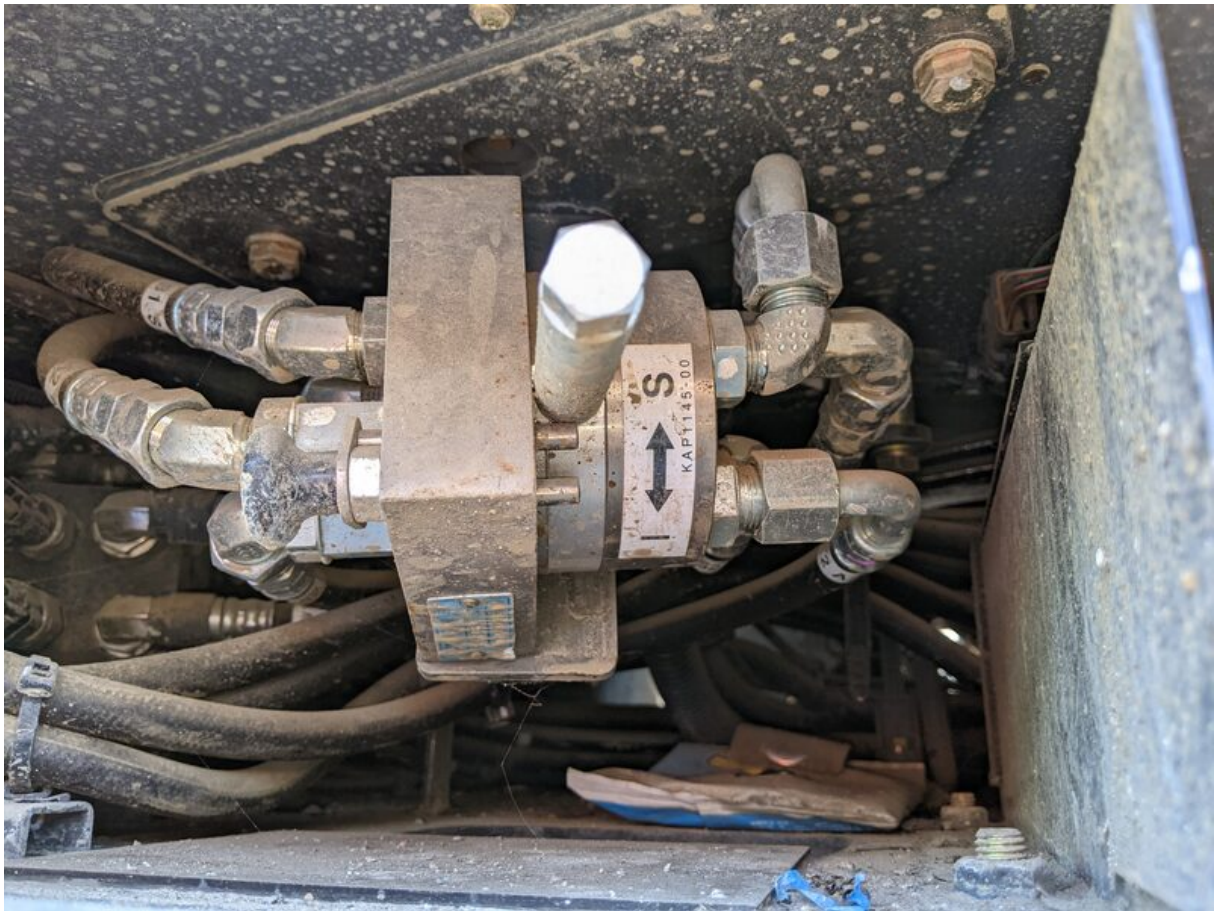




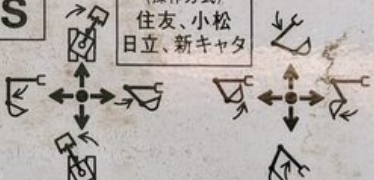










 <h2 style="text-align: center;">警告</h2>	<p>I</p> <p>《操作方式》 ISO、加藤 IHI、油谷</p> 
	<p>S</p> <p>《操作方式》 住友、小松 日立、新キャタ</p> 

• 操作方式を切り替える前に必ずエンジンを停止して下さい。

• 操作方式を切り替える時は運転室内に備え付けの操作銘板も必ず差し替えて下さい。

KHP35990-00

