

Model PC210LC-10

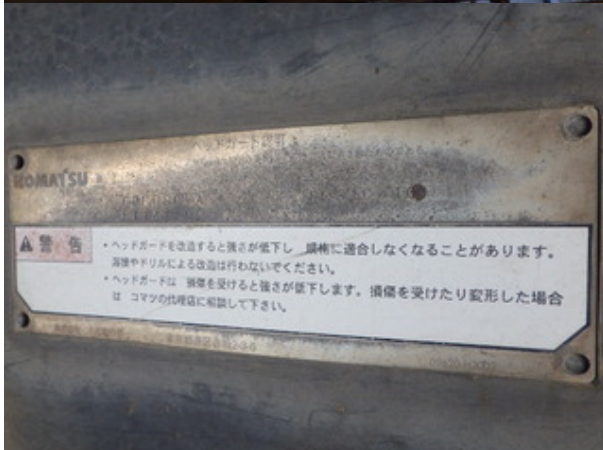
Serial 452299

Year 2014

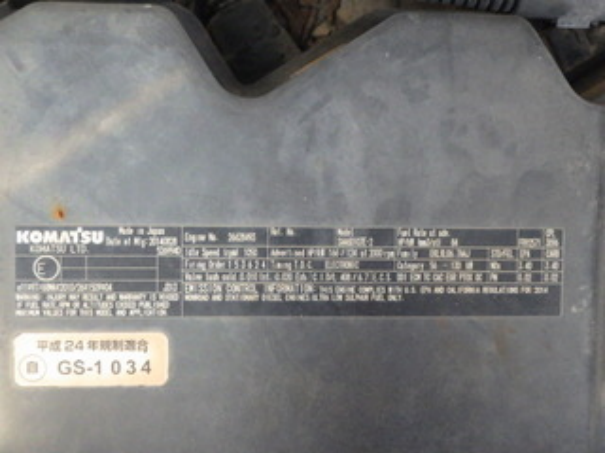
Hours 6261

Photos taken at Aug. 26, 2024









Engine No.	26628493	Ref. No.		Model	SAA6D107E-2	Fuel Rate at adr.	HP/kW (im3/h) (M)	PROSST	0.20%
Idle Speed (rpm)	1050	Advised HP/kW	166 / 124 at 2000 rpm	Family	EKLXL06.7AJ	STD/VEL	EPA	CRB	
Firing Order	1 5 3 6 2 4	Timing T.D.C.	ELECTRONIC	Category	56 - 130 MW	Int.	3.40	3.40	
Valve lash cold	0.010 Int. 0.020 Exh.	C.I./D/L	408 / 6.7	E.C.S.	DDI ECM TC CAC EGR PPRK DC	PM	0.02	0.02	

Engine No.	26628493	Ref. No.		Model	SAA6D107E-2	Fu
Idle Speed (rpm)	1050	Advised HP/kW	166 / 124 at 2000 rpm	Fa		
Firing Order	1 5 3 6 2 4	Timing T.D.C.	ELECTRONIC	Ca		
Valve lash cold	0.010 Int. 0.020 Exh.	C.I./D/L	408 / 6.7	E.C.S.	DD	

at 2000 rpm | Family EKLXL06.7AJ
 Category 56 - 130
 7 | E.C.S. DDI ECM TC CAC EGR P
 COMPLIES WITH U.S. EPA AND CALIF
 UR FUEL ONLY.







