

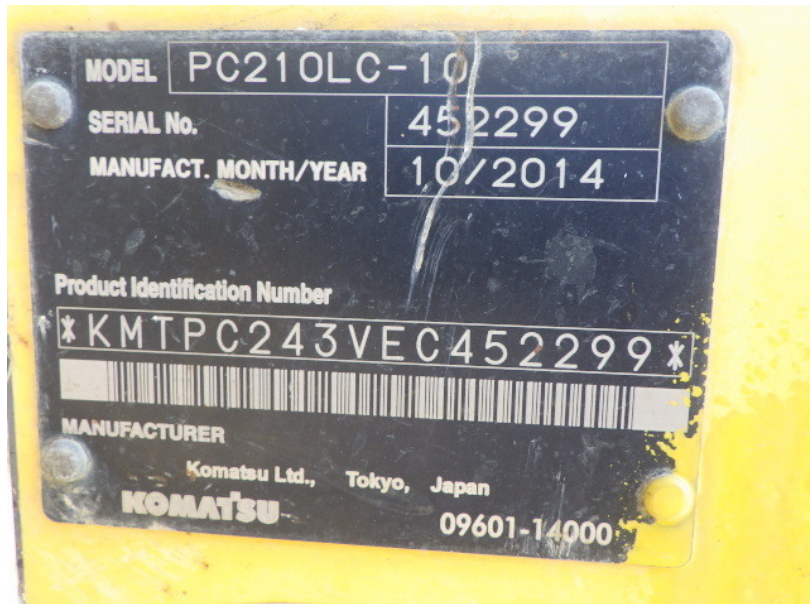
**Model PC210LC-10**  
**Year 2014**

**Serial 452299**  
**Hours 6261**

**Photos taken at Aug. 26, 2024**





























0828	Engine No. 26628493	Rel. No.	Model SAA6D107E-2	Fuel Rate at adv. HP/kW (mm <sup>3</sup> /st) 84	FR2571	CPL 3096
269940	Idle Speed (rpm) 1050	Advertised HP/kW 166 / 124 at 2000 rpm	Family EKLXL06.7AAJ	STD/FEL EPA CARB		
	Firing Order 1 5 3 6 2 4	Timing T.D.C. ELECTRONIC	Category 56 - 130 kW	NOx 3.40 3.40		
	Valve lash cold 0.010 Int. 0.020 Exh.	C.I./D/L 408 / 6.7	E.C.S. DDI ECM TC CAC EGR PTOX OC	PM 0.02 0.02		
J513	EMISSION CONTROL INFORMATION: THIS ENGINE COMPLIES WITH U.S. EPA AND CALIFORNIA REGULATIONS FOR 2014 NONROAD AND STATIONARY DIESEL ENGINES. ULTRA LOW SULPHUR FUEL ONLY.					

at 2000 rpm | Family EKLXL06.7AAJ  
 Category 56 - 130  
 7 | E.C.S. DDI ECM TC CAC EGR P  
 COMPLIES WITH U.S. EPA AND CALIF  
 UR FUEL ONLY.

3	Engine No. 26628493	Ref. No.	Model SAA6D107E-2	Fu HP
40	Idle Speed (rpm) 1050	Advertised HP/kW 166 / 124 at 2000 rpm	Fa	
	Firing Order 1 5 3 6 2 4	Timing T.D.C. ELECTRONIC	Ca	
	Valve lash cold 0.010 Int. 0.020 Exh.	C.I./D/L 408 / 6.7	E.C.S. DD	
3	EMISSION CONTROL INFORMATION: THIS ENGINE COMPLIES WITH NONROAD AND STATIONARY DIESEL ENGINES. ULTRA LOW SULPHUR FUEL ONLY.			

