

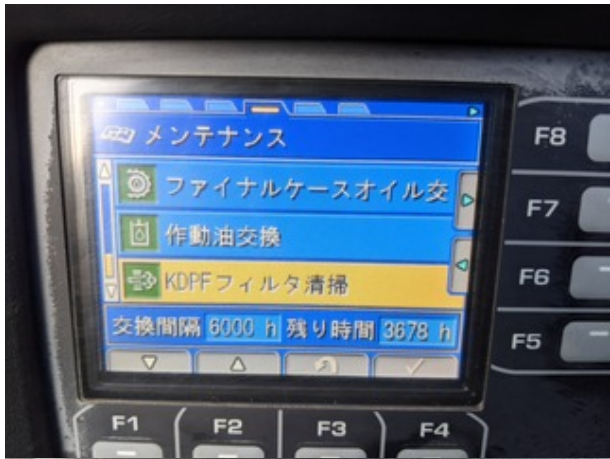
Model PC45MR-5  
Year 2017

Serial 31493  
Hours 2322

Photos taken at Dec. 06, 2023













EMISSION CONTROL INFORMATION  
THIS ENGINE COMPLIES WITH U.S. EPA AND CALIFORNIA  
REGULATIONS FOR 2017 M.Y. NONROAD AND STATIONARY/OFF-  
ROAD DIESEL ENGINES.  
ULTRA LOW SULFUR FUEL ONLY.  
ENGINE FAMILY : HYDRL2-130DA (1304MK37) DISP. : 2.190L  
MODEL : 4NHPAC ECU EM EGR DF1 P10X OC  
REFER TO OWNER'S MANUAL FOR MAINTENANCE AND ADJUSTMENTS.  
12002222222222222222 2017/11

































