

Model PC45MR-5
Year 2017

Serial 31493
Hours 2322

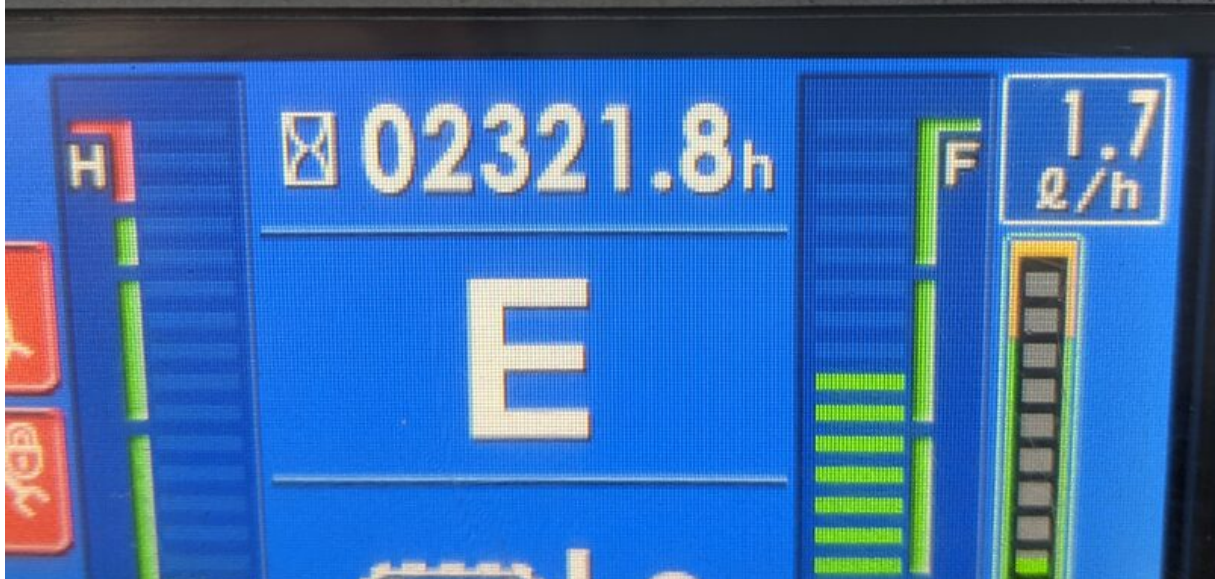
Photos taken at Dec. 06, 2023







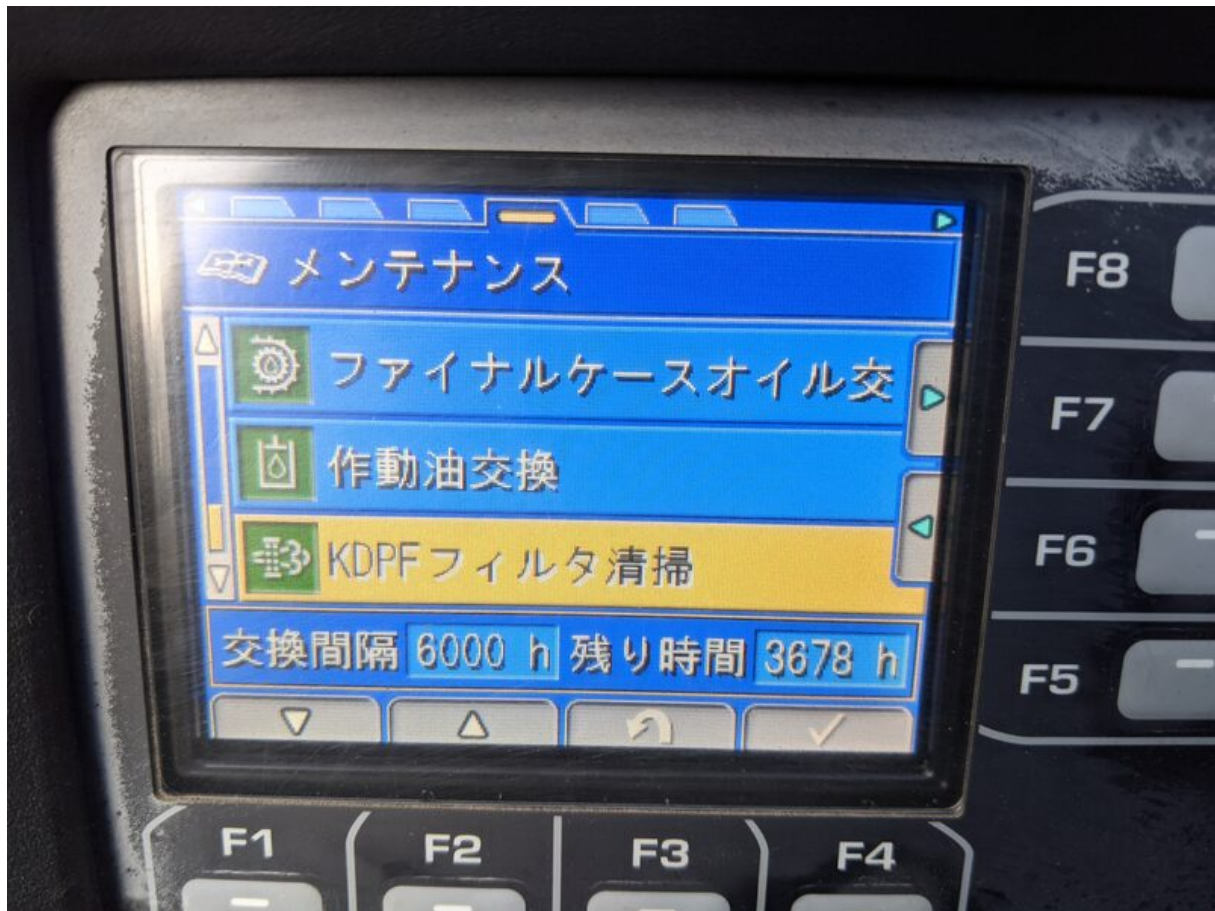


























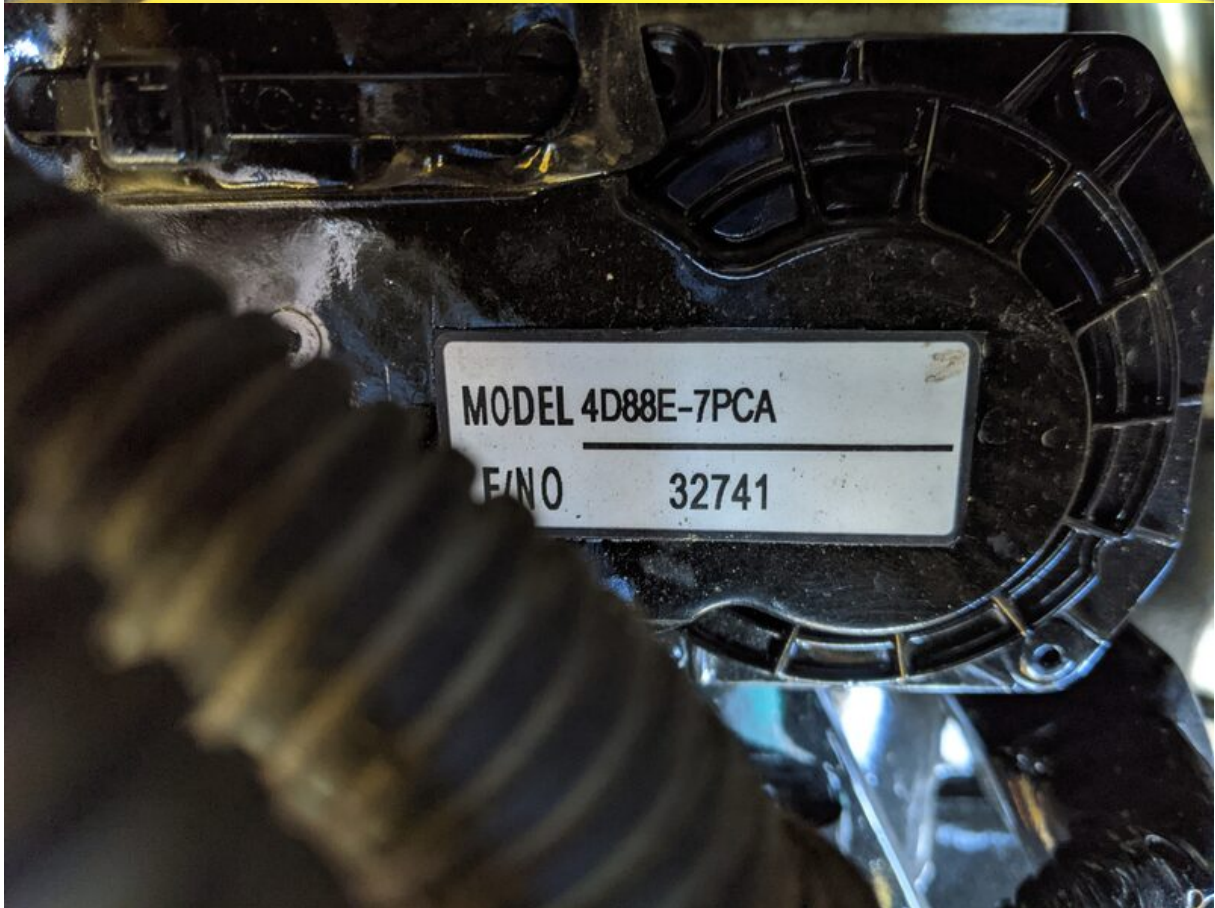


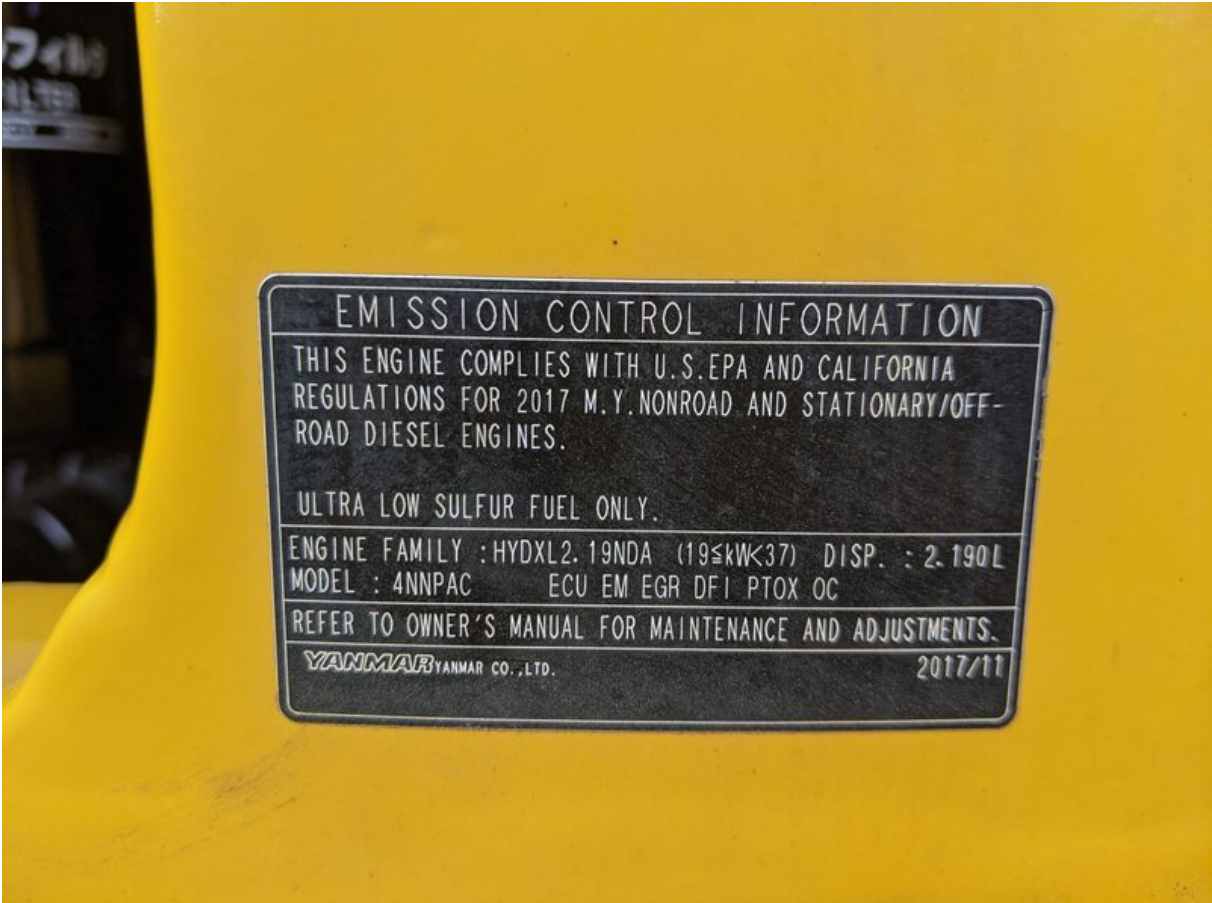












EMISSION CONTROL INFORMATION
THIS ENGINE COMPLIES WITH U.S.EPA AND CALIFORNIA REGULATIONS FOR 2017 M.Y. NONROAD AND STATIONARY/OFF-ROAD DIESEL ENGINES.
ULTRA LOW SULFUR FUEL ONLY.
ENGINE FAMILY : HYDXL2.19NDA (19≤kW<37) DISP. : 2.190L
MODEL : 4NNPAC ECU EM EGR DFI PTOX OC
REFER TO OWNER'S MANUAL FOR MAINTENANCE AND ADJUSTMENTS.
YANMAR YANMAR CO.,LTD. 2017/11

















































































































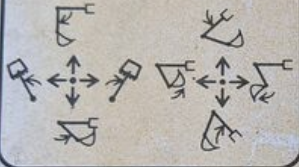
旧コマツ

22L-98-21231

- ・操作パターン切替
ロックレバーを
- ・操作パターン切替
(デテントを確
- ・操作パターン切替
必ず差し替えて

操作パターン切替テーブル

JISパターン

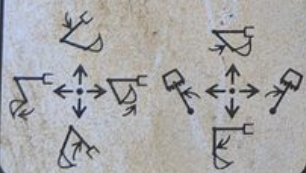


旧小松パターン

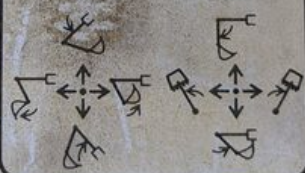


操作パターン切替テーブル

旧三菱パターン



旧神鋼パターン



21U-98-31410

