

Model PC20MR-3
Year 2012

Serial 21097
Hours 2749


Photos taken at Aug. 19, 2024





MODEL PC20MR-3
SERIAL No. 21097
MANUFACT. MONTH/YEAR 09/2012

Product Identification Number
KMTPC215A04021097



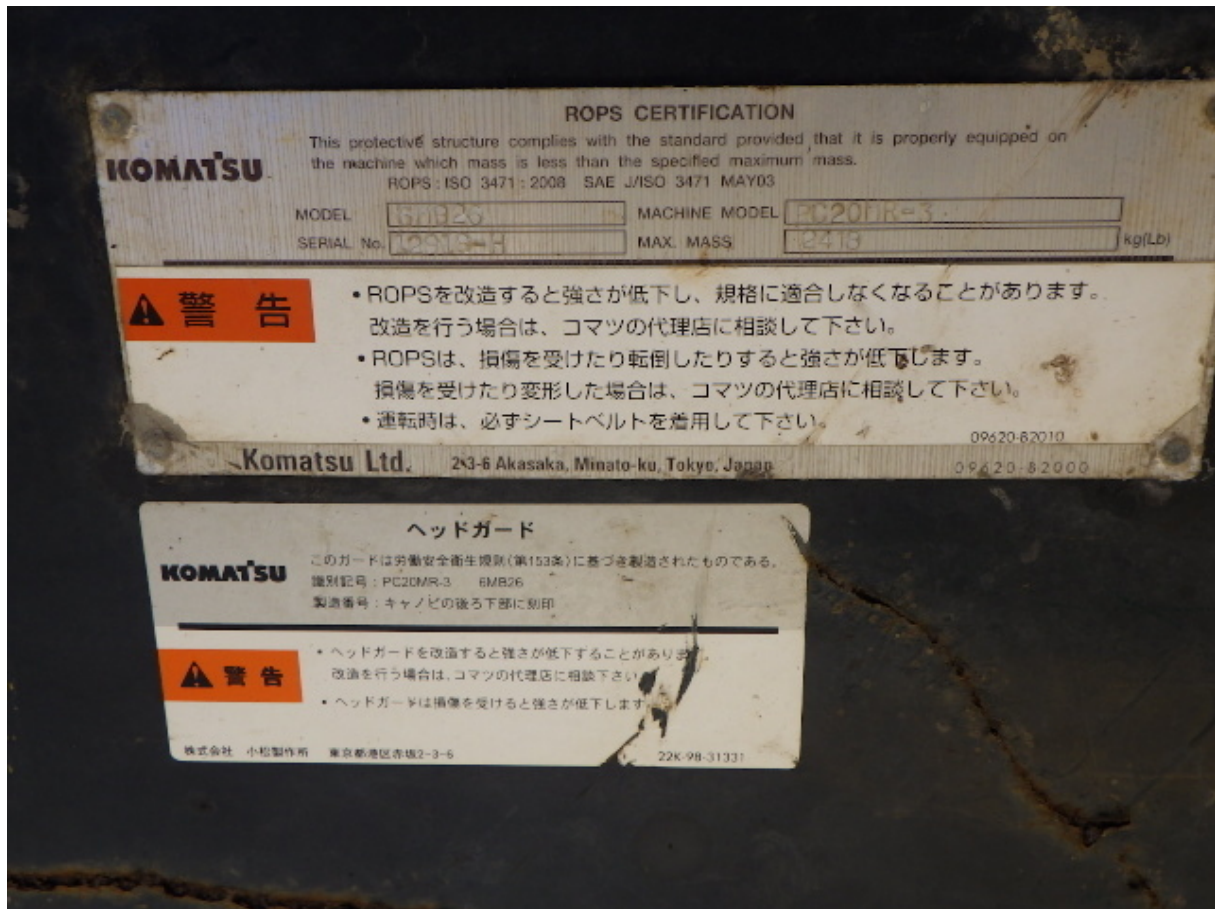
MANUFACTURER
Komatsu Ltd., Tokyo, Japan

KOMATSU 09601-14000















ENG.MODEL 3D76E-6NDA

E/NO

07361

EMISSION CONTROL INFORMATION

THIS ENGINE COMPLIES WITH U.S. EPA REGULATIONS FOR 2012 M.Y.
NONROAD AND STATIONARY DIESEL ENGINES.

ULTRA LOW SULFUR FUEL ONLY

ENGINE FAMILY: CYDXL1.11V3N

DISPLACEMENT: 1.116 LITERS

ENGINE MODEL : 3D76E-6N

E.C.S.: EM IFI

FUEL RATE: 21.6MM³/STROKE @ 15.7 kW/ 2500RPM (8≤kW<19)

REFER TO OWNER'S MANUAL FOR MAINTENANCE SPECIFICATIONS AND
ADJUSTMENTS.

YANMAR YANMAR CO., LTD.

2012/09



