

Model 316EL

Serial CAT0316ECWZY00143

Year 2014

Hours 7029

Photos taken at Jul. 30, 2024











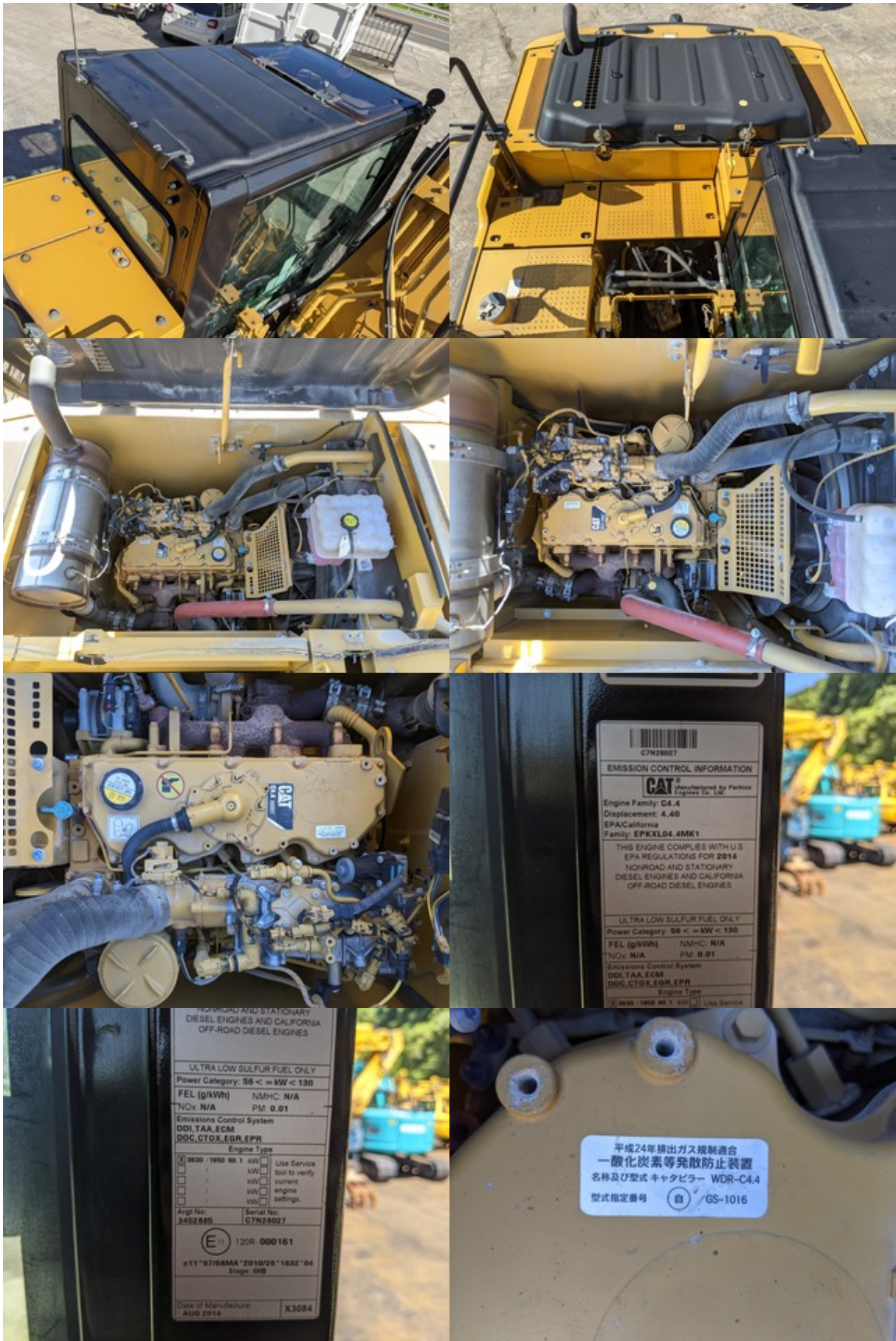












C7N28027  
**EMISSION CONTROL INFORMATION**  
 CAT<sup>®</sup> Manufactured by Perkins Engines Co. Ltd.  
 Engine Family: C4.4  
 Displacement: 4.40  
 EPA/California  
 Family: EPKXLD4.4MK1  
 THIS ENGINE COMPLES WITH U.S.  
 EPA REGULATIONS FOR 2014  
 NONROAD AND STATIONARY  
 DIESEL ENGINES AND CALIFORNIA  
 OFF-ROAD DIESEL ENGINES  
 ULTRA LOW SULFUR FUEL ONLY  
 Power Category: 56 <math><= </math> kW <math>< 130</math>  
 FEL (g/kWh) NMHC N/A  
 NOx N/A PM 0.01  
 Emissions Control System  
 DDI, TAA, ECM  
 DOC, CTOX, EGR, EPR  
 Engine Type  
 ( ) 3000 1800 90.1 kW ( ) Use Service

NONROAD AND STATIONARY  
 DIESEL ENGINES AND CALIFORNIA  
 OFF-ROAD DIESEL ENGINES  
 ULTRA LOW SULFUR FUEL ONLY  
 Power Category: 56 <math><= </math> kW <math>< 130</math>  
 FEL (g/kWh) NMHC N/A  
 NOx N/A PM 0.01  
 Emissions Control System  
 DDI, TAA, ECM  
 DOC, CTOX, EGR, EPR  
 Engine Type  
 3000 1800 90.1 kW  Use Service  
 kW  tool to verify  
 kW  current  
 kW  engine  
 kW  settings  
 Arg't No: 3-552885 Serial No: C7N28027  
 E 120R-000161  
 #11\*9768MA\*2010/26\*1632\*04  
 Stage: IIB  
 Date of Manufacture: ASD 2014 X3084

平成24年排出ガス規制適合  
 一酸化炭素等発散防止装置  
 名称及び型式 キャタピラー WDR-C4.4  
 型式指定番号 自 /GS-1016















